

# RIVERHOMES

Strand on The Green  
Chiswick W4

OIEO £1,500,000  
Freehold



## Strand on The Green Chiswick W4

Rarely available south facing family home with glorious river views situated in the picturesque Strand on The Green area of Chiswick, W4. Magnolia Wharf is a secluded private development accessed from the towpath and Thames Road through private gates. Set over 3 floors, this mid terrace townhouse offers three/four double bedrooms, large reception room, two bathrooms (one en-suite), farm house kitchen with Everhot oven and downstairs cloakroom/utility room. Other benefits include private rear garden, communal gardens, raised

front sun terrace and a double garage. Set in this wonderful riverside location, (opposite Oliver's Island) Strand on The Green is within a scenic conservation area and is walking distance to Kew Gardens. There are excellent travel links with Kew Bridge (to Waterloo, Clapham Junction etc) and Gunnersbury (District) and easy access to the A4/M4. Offered with no forward chain. EPC TBC.

### KEY FEATURES

**Mid terrace townhouse**

**Three to four bedrooms**

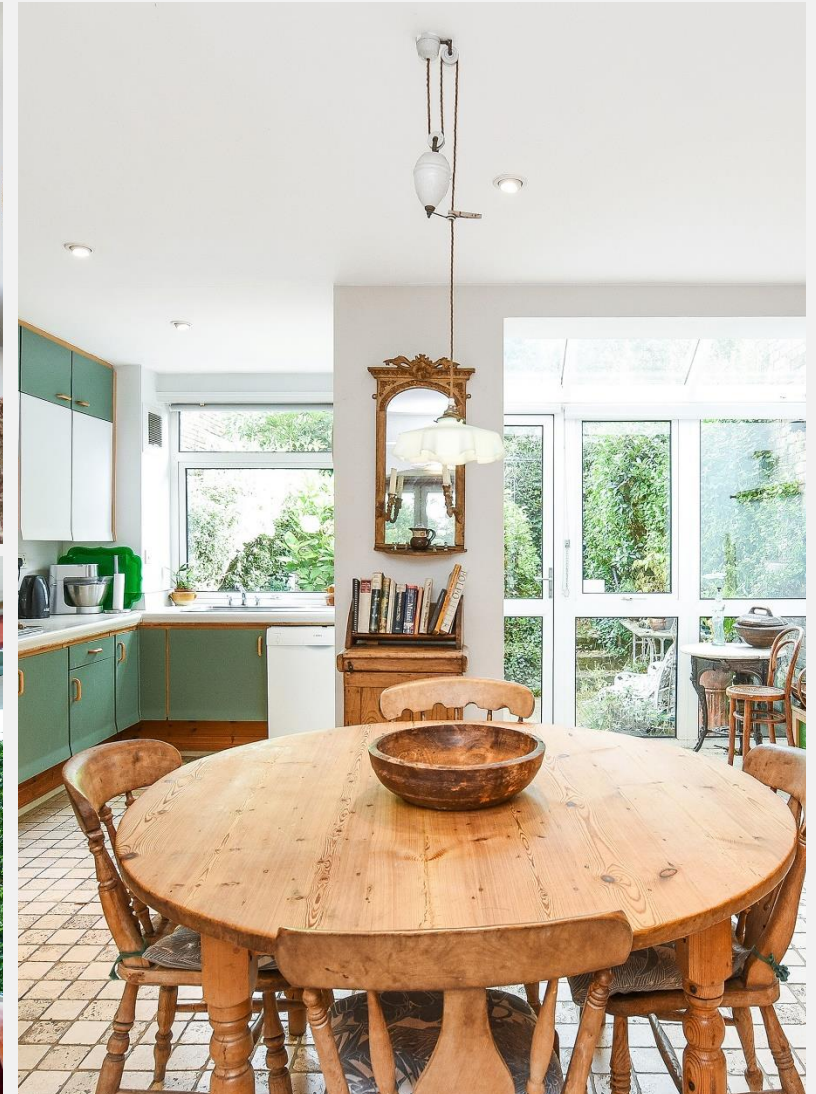
**Two bathrooms**

**Private rear garden**

**Raised front sun terrace**

**Double garage**

**Riverside location**





## KEY INFORMATION

<b>Local authority:</b>	London Borough of Hounslow
<b>Internal area:</b>	1,575.5 sq. ft. / 146.4 sq. m.
<b>Garage area:</b>	227.4 sq. ft. / 21.1 sq. m.
<b>Tenure:</b>	Freehold

