

# RIVERHOMES

Waldeck Road  
Chiswick W4

£1,500,000  
Freehold  
development opportunity



## Waldeck Road Chiswick W4

Planning permission was granted on the 2<sup>nd</sup> June 2020 by London Borough of Hounslow Council for the demolition of the existing buildings and the erection of a three storey block of five 2 bedroom apartments with associated parking and landscaping. Review full planning application via the planning website (planning reference: 01161/66A/P2). The site is presently a former industrial/works building. The total site area is in the region

of 313 sq. m. (3,369 sq. ft). However, prospective purchasers are advised to conduct their own measured site survey to ascertain the precise site size. The site is within a residential road with surrounding housing stock comprising of terrace houses. Strand on the Green is an idyllic riverside enclave well known for its beauty and tranquillity, historic pubs, local sailing, abundant river wildlife, and friendly community.

### KEY FEATURES

Development opportunity

Five two bedroom apartments

Planning permission approved

Planning application number:  
01161/66A/P2

Total area approx: 3,369 sq. ft.

0.4 miles to Kew Bridge (National Rail)

0.6 miles to Gunnersbury (Underground)



Approx. Gross Internal Floor Area 756 sq. ft / 70.20 sq. m

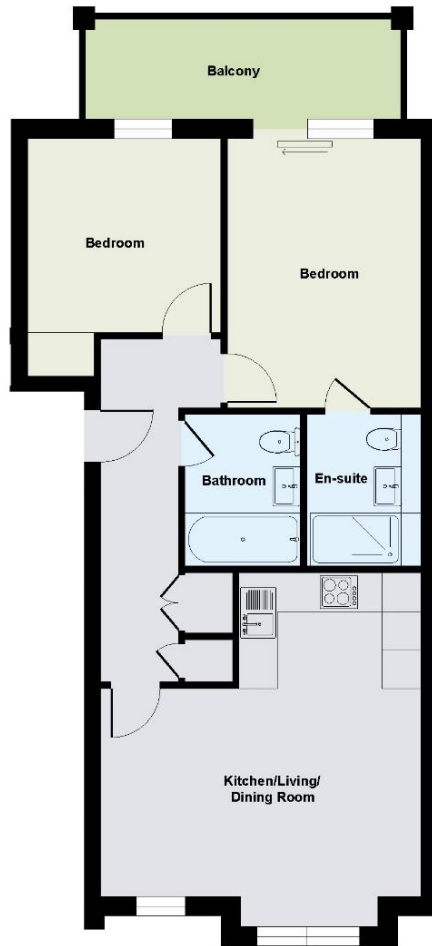


Approx. Gross Internal Floor Area 681 sq. ft / 63.30 sq. m



Flat 4  
Approximate Floor Area  
807 sq. ft  
(75.00 sq. m)

Approx. Gross Internal Floor Area 807 sq. ft / 75.00 sq. m



Flat 3  
61.2 sqm / 659 sqft

Approx. Gross Internal Floor Area 659 sq. ft / 61.20 sq. m



EXAMPLE OF SECURED SLOT IN BIKE STORAGE



EXAMPLE OF PERMEABLE PAVING FINISH TO CAR PARKING AND ACCESS PATHS

## KEY INFORMATION

<b>Local authority:</b>	London Borough of Hounslow
<b>Internal area:</b>	Approx. 3,369 sq. ft. / 313 sq. m.
<b>Planning application number:</b>	01161/66A/P2
<b>No. of apartments:</b>	5

Computer generated images and floorplans for guidance purposes only with authorship and copyright to HTP Architecture LLP.

