

RIVERHOMES

St Katharine Docks
Wapping E1W

£150,000
Leisure Mooring



St Katharine Docks Wapping E1W

Blue Star is a beautiful example of a Princess 55. Broad in the beam and 55 foot in length, this boat feels very spacious and is awash with natural light. All the internal spaces offer excellent headroom and make Blue Star a pleasure to be aboard. The current owner has refurbished extensively and created a very comfortable and welcoming living space. Accommodation comprises two generous cabins, two wet rooms, a large saloon and an additional sun deck which can be completely enclosed to enjoy all year round. Powered by twin Volvo TMD engines which kick out an impressive 480 horse power per unit, Blue Star is a great cruising boat as well as an attractive and very functional pied a terre. Moored at St Katherine Docks, the dock offers excellent transport links - Tower Hill Underground and Tower Gateway DLR Stations are a short walk away. There are also numerous restaurants and bars located within the marina, offering residents and visitors a variety of options.

KEY FEATURES

Two cabins, two wet rooms

Sun deck

Ample storage

Additional seating on Flybridge

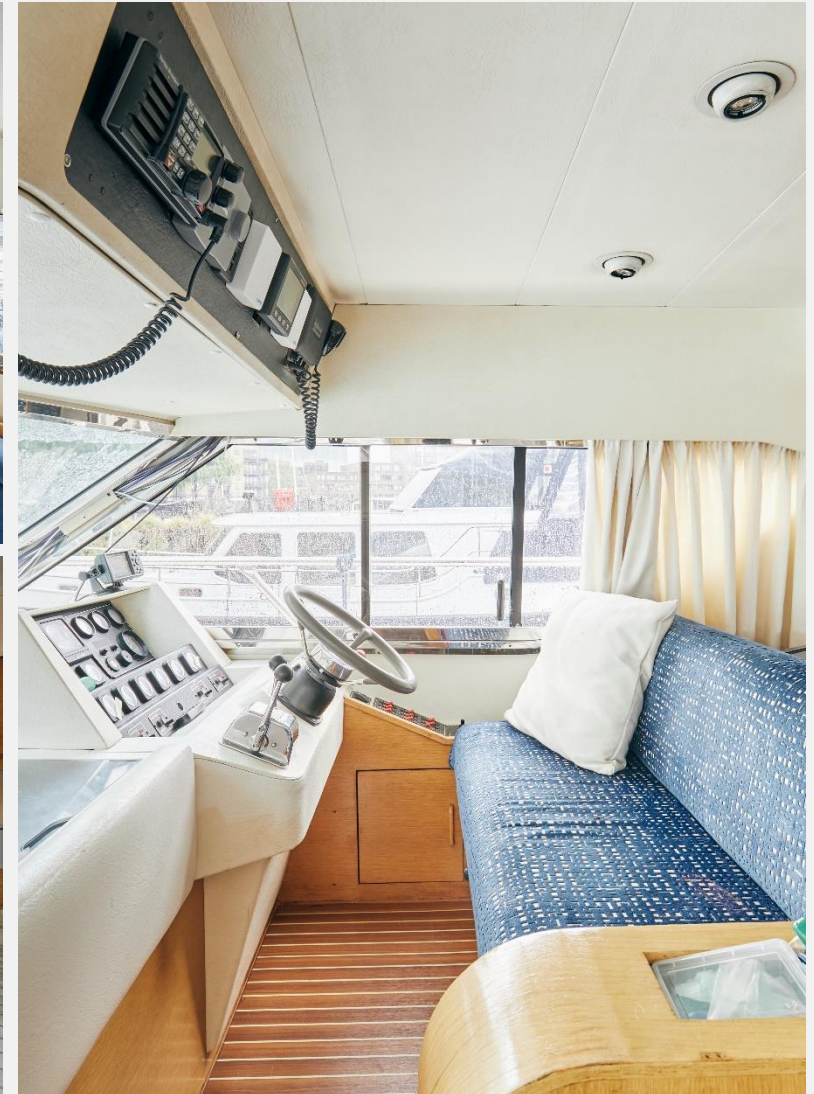
Excellent transport links

Internal area: 547 sq ft. / 51 sq. m.

Length: 55 ft. / 17 m.

Mooring charges : £13,880 per year approx.

Local Authority: London Borough of Tower Hamlets

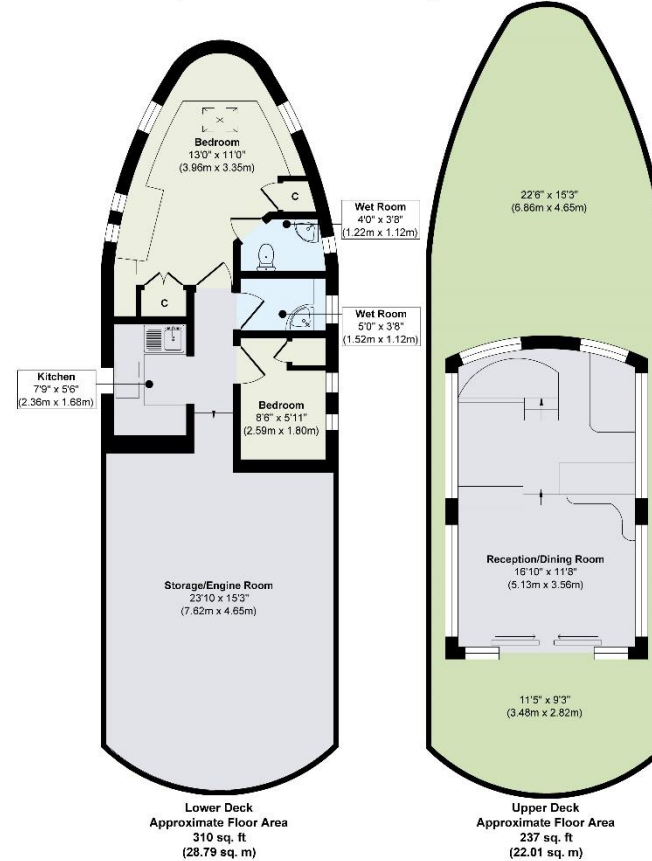




KEY INFORMATION

Local authority:	London Borough of Tower Hamlets
Internal area:	547 sq. ft. / 51 sq. m.
Garden area:	Sun Deck
No. of cabins:	2

Blue Star, St. Katharines Way London, E1W



Approx. Gross Internal Floor Area 547 sq. ft / 51.00sq. m

Illustration for identification purposes only, measurements are approximate, not to scale.