



This southwest facing one bedroom apartment is on the second floor of a charming red brick Victorian building in the heart of Chelsea. This well-proportioned flat has a large bay-fronted, southwest facing reception room at the front of the property. There is a separate kitchen and spacious double bedroom to the rear, along with a bathroom. The property is moments from Chelsea Physic Garden, Burton Court park and the Royal Hospital Chelsea. Conveniently located for the highly desirable Kings Road and the restaurants and boutiques that has to offer. The apartment is being sold with a 61 year lease. Parking permits available from Royal Borough of Kensington and Chelsea.

ENERGY PERFORMANCE CERTIFICATE

Score	Energy rating	Current	Potential
92+	A		
81-91	B		
69-80	C		80 C
55-68	D	66 D	
39-54	E		
21-38	F		
1-20	G		

KEY INFORMATION

Local authority: Royal Borough of Kensington and Chelsea

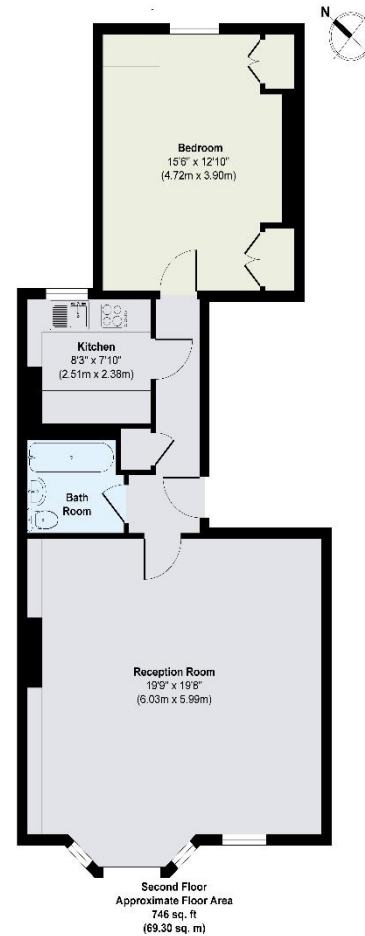
Internal area: 746 sq. ft. / 69.30 sq. m.

Service charge: £5,400 approx. per year (incl. Ground Rent)

No. of bedrooms: 1

Lease length: 61 years remaining

Council tax: Band G - £2,274.12 for 2022/23



Approx. Gross Internal Floor Area 746 sq. ft / 69.30 sq. m
Illustration for identification purposes only, measurements are approximate, not to scale.

