

RIVERHOMES

Strand on The Green
Chiswick W4

Guide Price £895,000
Freehold



Strand on The Green Chiswick W4

Charming, former fisherman's cottage, originally one of five (two were absorbed into the Bulls Head, two have been knocked together) built circa 1770. Grade 2 listed and providing glorious views of the River Thames. Entering the property at the back through a quaint mature courtyard garden, with two large storage cupboards into the garden, the toilet and kitchen are to the left and the main reception room, with fire place and views are to the front towards the river. The living room leads through a hidden door to the original staircase (original flooring throughout), up to the first floor

which houses two double bedrooms (one with majestic river views) and family bathroom. The second floor has a further double bedroom. Strand on the Green is one of London's premier riverside locations and boasts a wealth of historic pubs and restaurants in addition to an array of local amenities. Early viewing is highly recommended.

KEY FEATURES

Former fisherman's cottage

Build circa 1770

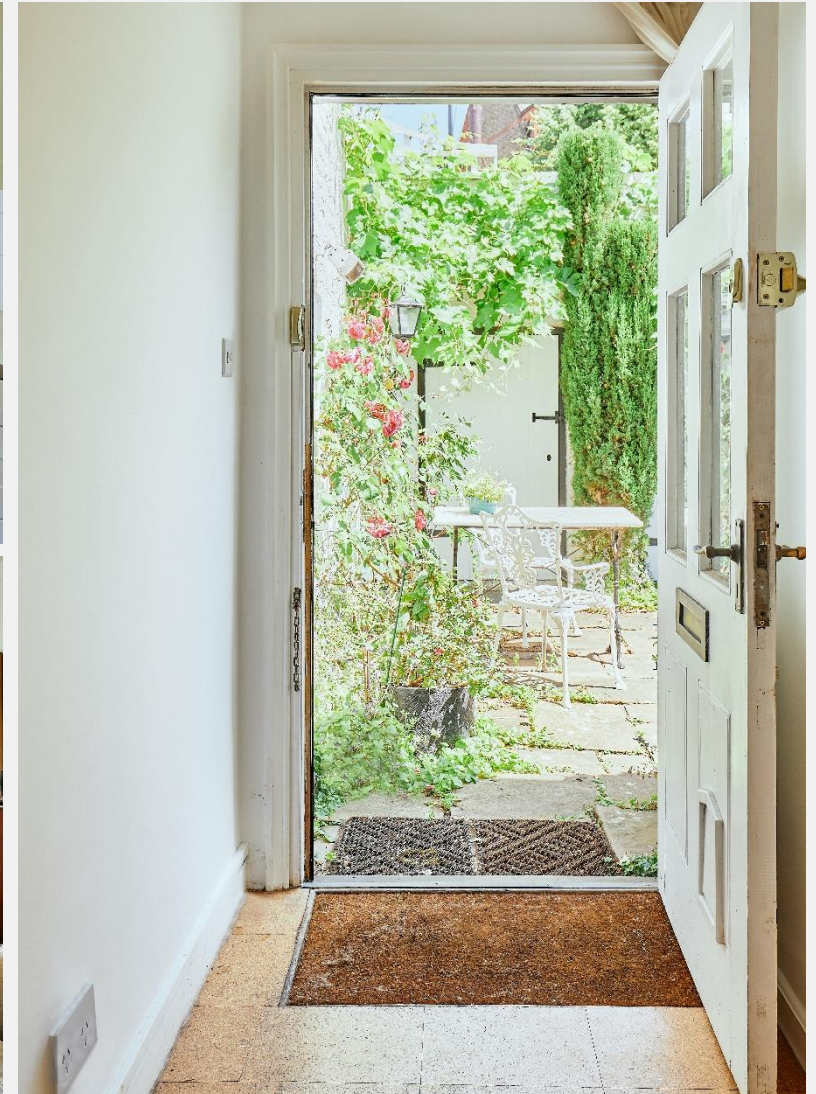
Grade 2 listed building

Mature courtyard garden

Fireplace

Views towards the river

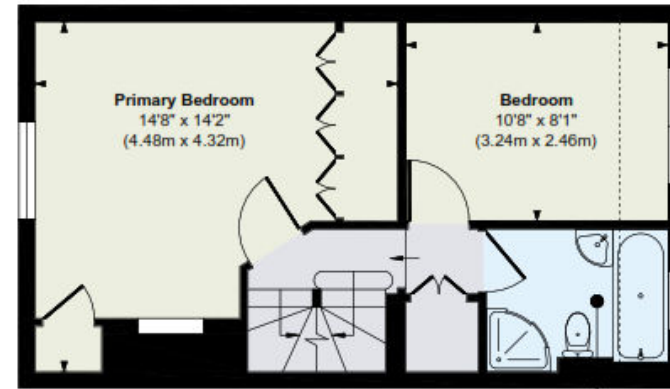
Original flooring throughout



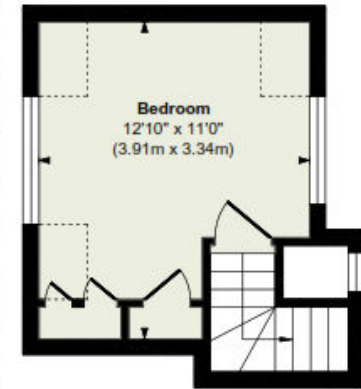


KEY INFORMATION

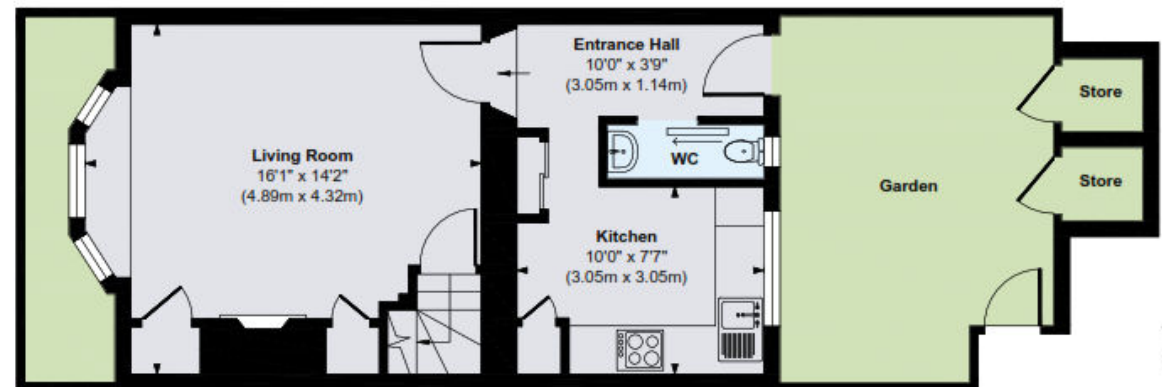
| | |
|--------------------------|----------------------------|
| Local authority: | London Borough of Hounslow |
| Internal area: | 900 sq. ft. / 83.61 sq. m. |
| No. of bedrooms: | 3 |
| Council Tax Band: | F |



First Floor
Approximate Floor Area
363 sq. ft
(33.79 sq. m)



Second Floor
Approximate Floor Area
153 sq. ft
(14.30 sq. m)



Ground Floor
Approximate Floor Area
384 sq. ft
(35.67 sq. m)

