

RIVERHOMES

St Katharine Docks
Wapping, E1W

£250,000
Leisure Mooring



St Katharine Docks Wapping, E1W

Please note this is not Leasehold but a licence agreement for the mooring, call for further information. This stylish floating home is based on a hand-crafted (Sheffield Keel Hull) and was built in 2016 to a high standard. Accommodation comprises a generous living area with fully-fitted galley including granite work tops and modern integrated appliances. There's a master cabin and second cabin/office space - both with flat screen TVs and built-in storage. There is also a toilet/shower room. The living area has a log burner for extra heat, a sky-light and port holes allowing in ample natural light. There is a built-in flatscreen TV with a

surround sound system. Outside is a good sized deck space with built-in seating to enjoy entertaining or just relaxing, enjoying the vibrant atmosphere of the marina. The design and build of this widebeam boat offer an exceptional contemporary finish throughout. St. Katharine Docks is an unrivalled location for working and living, close to Tower Hill tube station (District & Circle Line) and Tower Gateway station (DLR). The marina also has a variety of shops, restaurants and bars and is just a short walk from Tower Bridge, with easy access to Shad Thames and beyond

KEY FEATURES

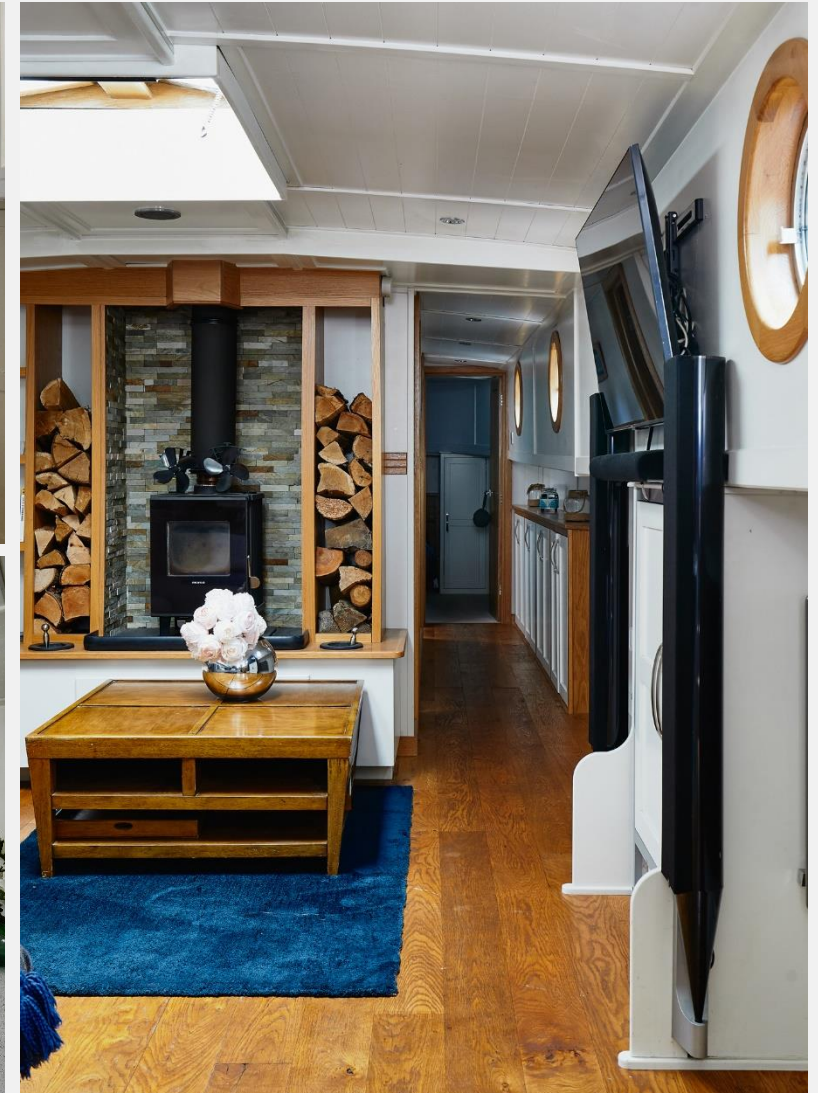
Mooring and Maintenance fee: £18,105 per annum approx.

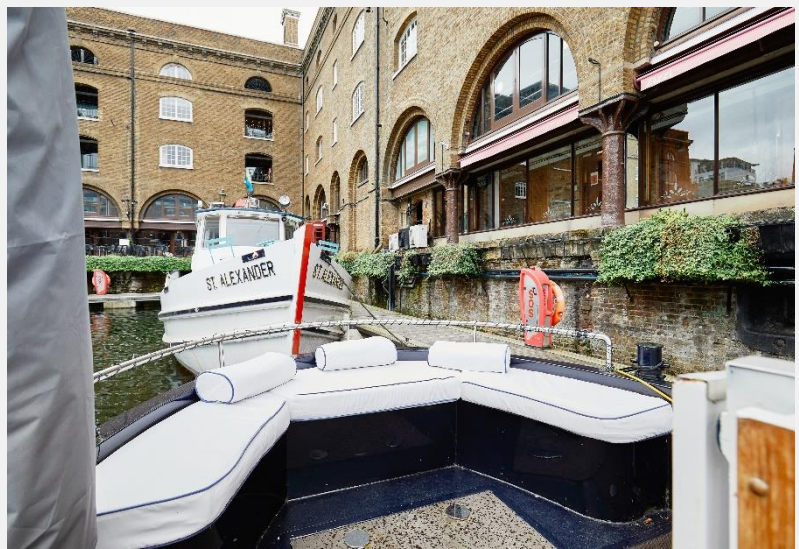
Length: 60 ft. Width: 12 ft. 3 in

Master cabin and second cabin / office space

Sky-light and portholes letting in ample natural light

Log burner in living area for extra heat in the winter





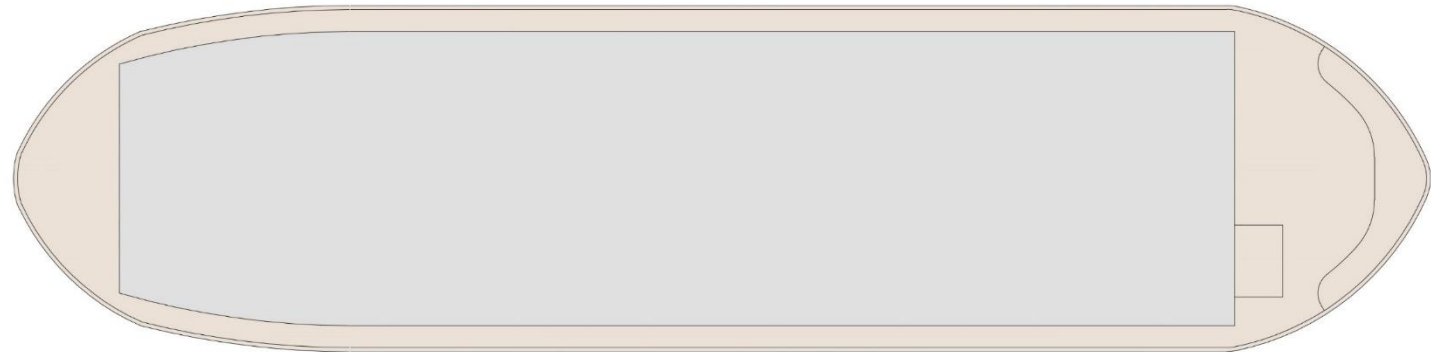
KEY INFORMATION

Local authority: London Borough of Tower Hamlets.

Internal area: 504 sq. ft. / 46.8 sq. m.

Garden area: Deck

No. of bedrooms: 2



Upper Deck



Lower Deck