



Cheyne Walk Chelsea SW10

A fabulous houseboat in one of London's most desirable areas - Cheyne Walk, Chelsea - and with one of the best positioned mooring berths there! The houseboat is finished to a very high standard throughout, with wonderful accommodation and entertainment space. This includes a large, modern, open-plan fully-fitted kitchen and reception area with French doors leading out to the deck. From there you can enjoy amazing river views and it's ideal for al-fresco dining, entertaining or just watching the world go by. Downstairs there is a fantastic, light-filled master bedroom with en suite; riverside viewing platform and

access to a further outside deck. There is also a fully equipped modern bathroom and a second double bedroom. All houseboats at Cheyne Walk have the benefit of a night-watchman, full maintenance team and CCTV for added security and are eligible for a Kensington & Chelsea parking permit. A great opportunity to live on a wonderful houseboat in one of London's most enviable postcodes.

KEY FEATURES

2 bedrooms

Finished to a high standard

Modern fully-fitted kitchen

Night watchman and CCTV

Complete refurbishment and internal redesign in 2021

Conveniently located close to shops, restaurants and public transport

Council tax: Band C - £1,264.35 for 2023/24

Local authority: Royal Borough of Kensington and Chelsea

Mooring fee: £10,994 per year

Maintenance charges: £7,821.38 per year

Licence expires on the 25th May 2037

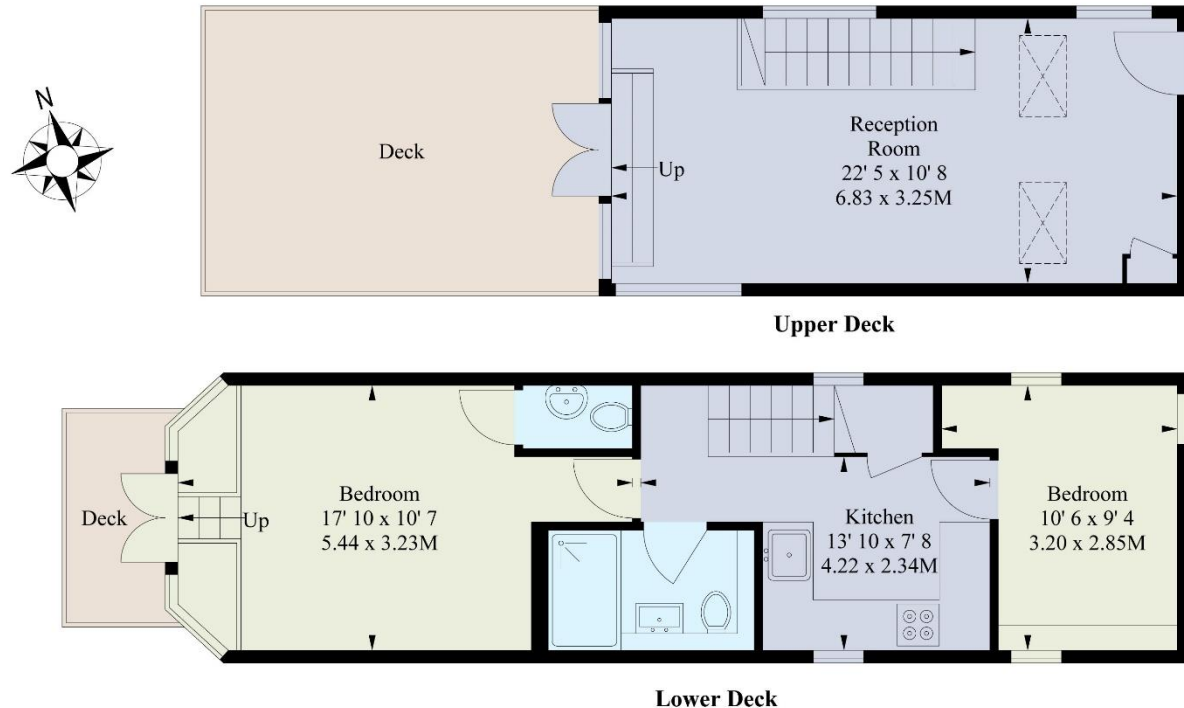




KEY INFORMATION

Local authority:	Royal Borough of Kensington and Chelsea
Internal area:	647 sq. ft. / 60.1 sq. m.
Garden area:	Deck
No. of bedrooms:	2

Patriarch



Approximate Gross Internal Area 60.1 sq.m / 647 sq.ft

This plan is not to scale and must be used as layout guidance only. All measurements and areas are approximate and should not be relied upon to provide accurate information. This plan must not be relied upon when making property valuations, design considerations or any other such relevant decisions. We accept no responsibility or liability (whether in contract, tort or otherwise) in relation to any loss whatsoever arising from or in connection with any use of this plan or the adequacy, accuracy or completeness of it or any information within it.