



The Hollows Brentford TW8

This stunning 25.66 m. x 4.96 m. steel built, Dutch barge / floating home is situated on a secure residential mooring in Brentford and enjoys largely uninterrupted southerly views towards Kew Bridge and across to the rural south bank of the riverside in Kew. The decor itself exudes a great deal of taste and style and the houseboat would be ideal as a pied-à-terre or permanent home, she is bright and spacious throughout and comprises a 30 ft. / 10 m. reception room leading to an integrated open-plan kitchen with breakfast bar, a superb master bedroom with abundant fitted storage and a contemporary style bathroom, two further cabins (one en suite), guest cloakroom, and characterful wheelhouse with doors to the deck. Externally the boat enjoys wonderful views throughout the day and night from its spacious deck. The mooring itself is conveniently located on the Thames riverfront offering easy access to Kew Bridge and Brentford with Chiswick, Kew & Richmond a short drive away. A rare opportunity to acquire this secure, freehold residential mooring on the River Thames with a service charge/mooring fee of £2,832 per annum approx.

KEY FEATURES

Three bedrooms

Secure residential mooring

30 ft. reception room

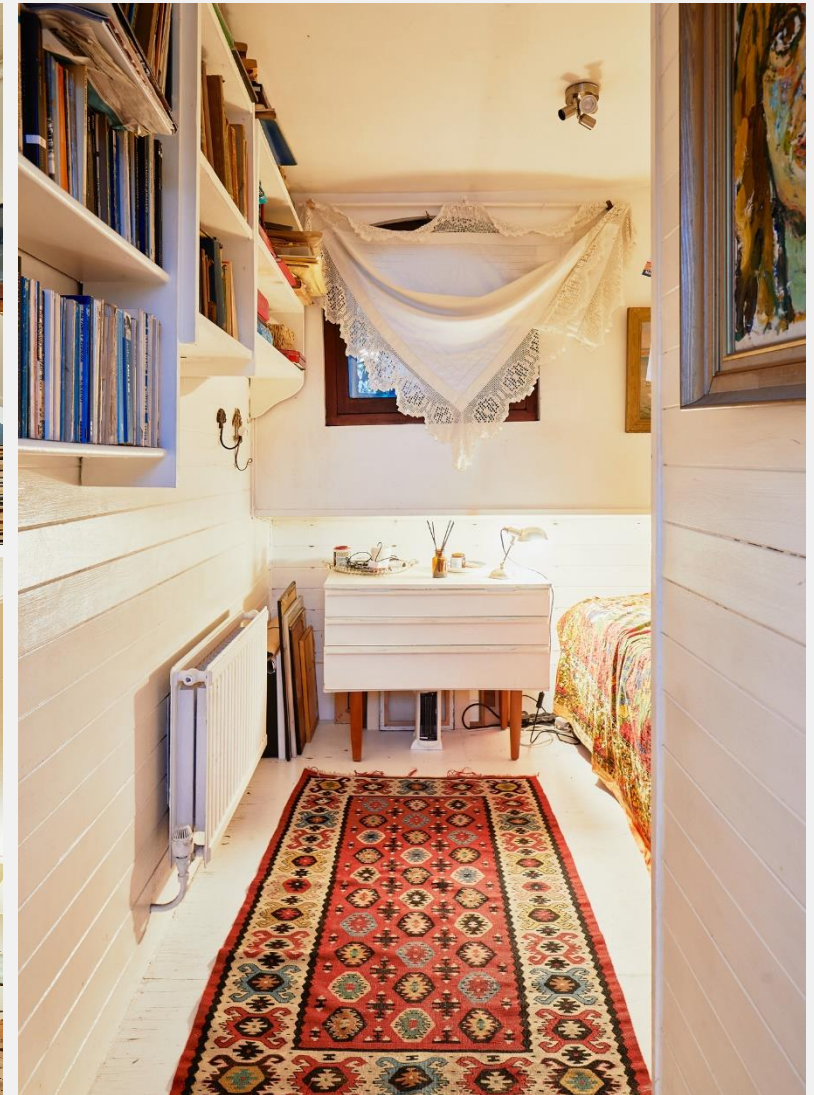
Open-plan kitchen with breakfast bar

Master bedroom with abundant fitted storage

Bright and spacious throughout

An in the water survey conducted in 2022

A possibility to double moor an additional vessel alongside subject to PLA approval





KEY INFORMATION

Local authority:	London Borough of Hounslow
Internal area:	1,161 sq. ft. / 107.98 sq. m.
Council tax band:	A
No. of bedrooms:	3
Service charge:	Approx. £2,832 per annum
Insurance:	Approx. £1,700 per annum
Thames Water:	Approx. £100 per annum

