



St Katharine Docks Wapping E1W

This is a 45' Peniche Dutch Style Barge, built in 2016 by RLL Boats. It has a black steel hull, steel superstructure and deck. The air Draught is 2.7m.

The vessel has two steering positions - inside and outside. There is a Single Shire 50HP diesel inboard engine. In the saloon there is an L shaped seat and round wooden table, with two doors either side leading out to the deck.

Below deck and to the rear is the bedroom with a full size double fitted bed, grey chests of drawers, wardrobes and a grey carpet, all finished to a high standard. There is an en suite shower room with washbasin, shower and WC.

There is an open plan kitchen/sitting room with blue and white tiles and grey wooden floor. The fully fitted kitchen has a Stoves induction cooker, fan assisted oven and grill, stainless steel sink, hot water, Lamona fridge/ freezer

and a breakfast bar island with cupboards. The sitting room has 2 easy chairs, a stool, LG TV, bookcase and storage. There is "Planer" 4kw hot air heating.

Outside there is a good sized deck for entertaining, with plenty of space for a wooden table and 4 chairs. This beautiful Dutch Style Barge has been completed to a high standard and certainly merits a closer look.

St Katherine Docks marina offers excellent transport links. Tower Hill Underground and Tower Gateway DLR Stations are a short walk away. There are also numerous restaurants and bars located within the marina, offering residents and visitors a variety of options. Please note this is not Leasehold but a licence agreement for the mooring. Please call for further information.

KEY FEATURES

45' Peniche Dutch Style Barge

Two steering positions

One double bedroom

Open plan kitchen / sitting room

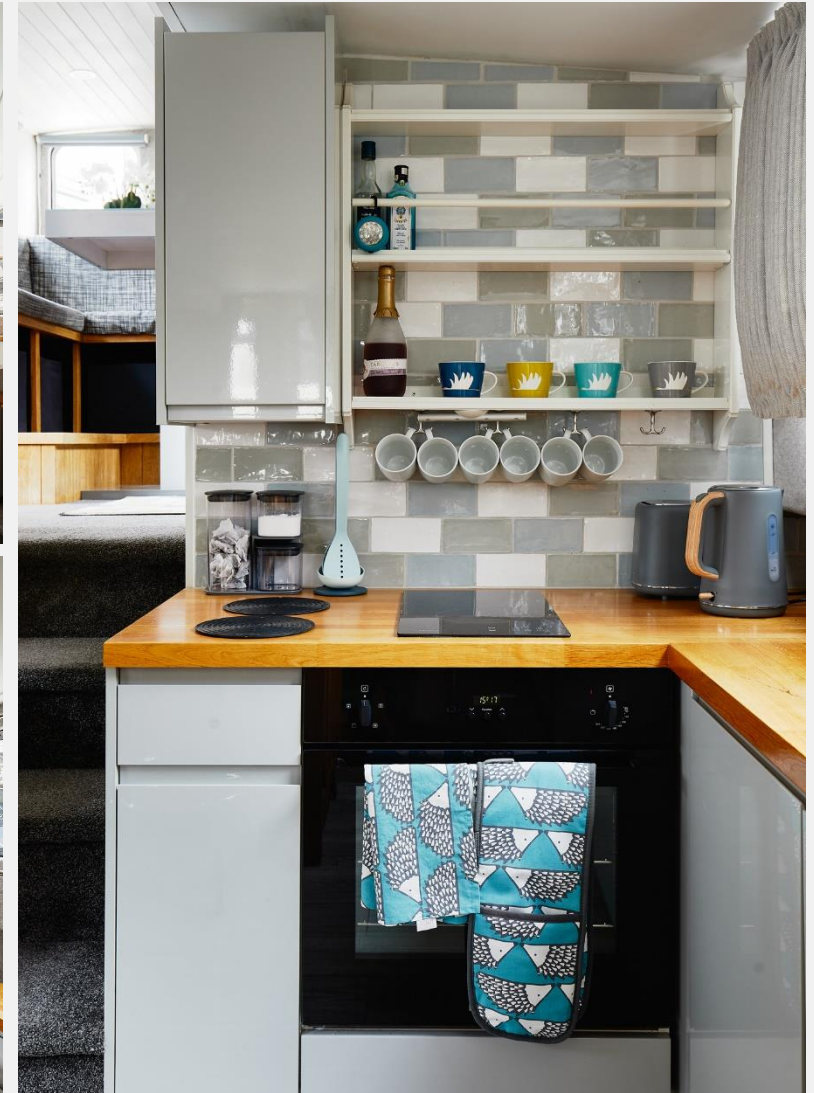
Good sized deck

Completed to a high standard

Local authority: London Borough of Tower Hamlets

Mooring charges: £16,470 per year approx.

Conveniently located close to shops, restaurants and public transport





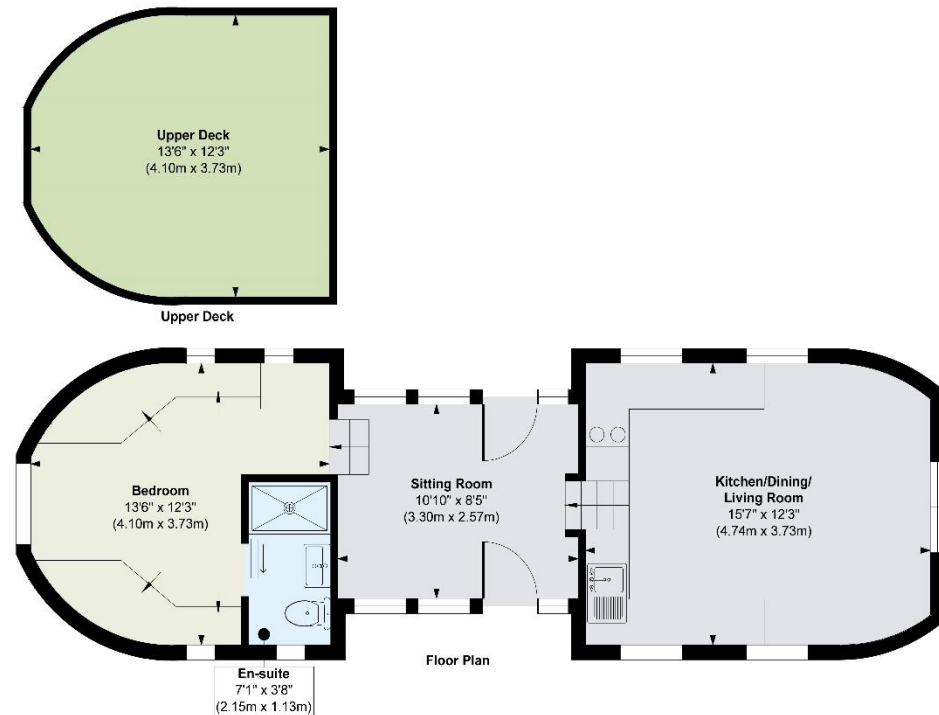
KEY INFORMATION

Local authority: London Borough of Tower Hamlets

Internal area: 434 sq. ft. / 40.33 sq. m.

No. of bedrooms: 1

ST KATHARINES DOCKS MARINA, E1W



Approx. Gross Internal Floor Area 434 sq. ft / 40.33 sq. m

Illustration for identification purposes only, measurements are approximate, not to scale.