



Thornes House, Vauxhall, SW11

# Thornes House, SW11

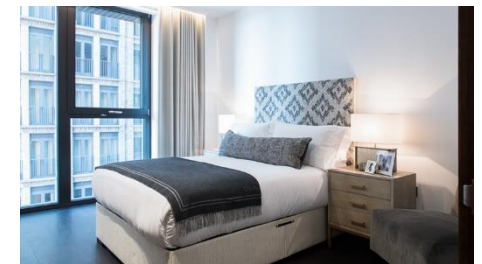
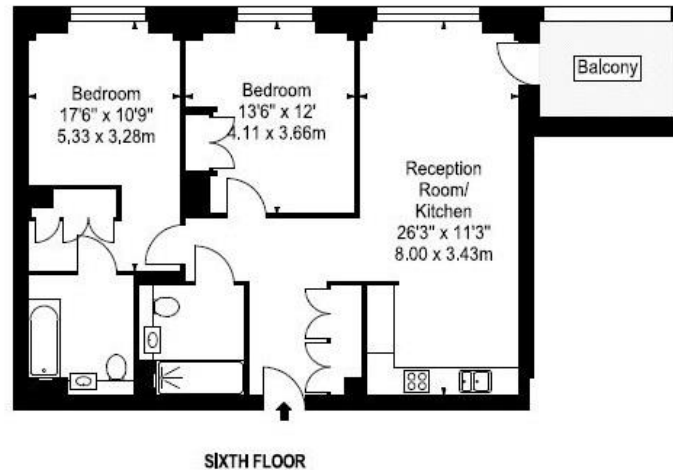
£925 per week – Furnished or Unfurnished

An impressive interior designed 902 Sq Ft two-bedroom, two-bathroom apartment located in Thornes House forming part of The Residence Collection in Nine Elms on London's iconic South Bank.

This luxury apartment is situated on the 6th floor of this prestigious building which features a 24-hour manned concierge along with a dedicated building manager, lift service, gym, media room, and board room.

The apartment comprises a spacious reception room complete with Samsung Smart TV's with Bose sound bars incorporating a built in Amazon Alexa to control the apartments lighting, TV and heating systems along with a private balcony. The reception room is open plan with a fully fitted kitchen featuring integrated AEG appliances with floor to ceiling windows providing far reaching views across London. The apartment offers two double-bedrooms, two-bathrooms, one of which is an en-suite.

Thornes House is ideally positioned between Vauxhall stations and the new Nine Elms Northern Line underground station (set to open in 2022), adding to the extensive transport links including tree lined footpaths, dedicated cycle lanes, and Clipper river boat services.



## Key information

- **Local Authority:** London Borough of Wandsworth
- **EPC Rating:** B
- **Spacious two bedroom apartment**
- **Council tax:** Band F - £1,256.82 for 2021/22
- **Private balcony**
- **Floor to ceiling windows**
- **Views of London skyline**

Score	Energy rating	Current	Potential
92+	A		
81-91	B	87   B	87   B
69-80	C		
55-68	D		
39-54	E		
21-38	F		
1-20	G		

020 7407 8000 central@riverhomes.co.uk Tintagel House, 92 Albert Embankment Vauxhall SE1 7TY riverhomes.co.uk

For clarification; These particulars are believed to be correct but their accuracy is not guaranteed and do not form part of any contract. Any photographs are intended as a guide only and it should not be assumed that any of the fixtures / fittings are included in any sale. Appliances, including central heating, have not been tested. All lease, service charge and ground rent details, if shown, have been provided by the vendor and have not been verified. If you require clarification of any points please contact us. Illustration Purpose Only - Whilst every attempt has been made to ensure the accuracy of the floor plan contained here. Measurements of doors, windows, rooms and other items are approximate and no responsibility is taken for any errors, omissions or mis-statements. The plan is for illustrative purpose only, is not to scale and should be used as such by any prospective purchaser.