



Chelsea Harbour Chelsea SW10

"Richard Parker" is a remarkable 70 ft. x 12.6 ft. wide beam barge moored in Chelsea Harbour, so ideal as a London pied-à-terre. This exquisite houseboat features a spacious double bedroom with a king-sized bed, ample built-in storage and portholes that bathe the room in natural light. There's a large bathroom equipped with both a double shower and separate bath. The second bedroom is furnished with a double bed and integrated wardrobe. The kitchen and living area are generously proportioned and elegantly designed, complete with quartz countertops. There is ample cabinetry and built-in appliances including a dishwasher, washing machine and oven/hob. Large windows throughout ensure the space is awash with natural light, enhancing the meticulously finished interiors that epitomize high-end minimalism. Ingenious storage solutions are employed throughout to

maximize space. Chelsea Harbour is moments from Imperial Wharf overground station, which is just one stop from Clapham Junction - the busiest station in Europe. This line also links to the underground at West Brompton and there are good links to the City and Docklands. There's direct access from the harbour to the Thames Path for walking/cycling/jogging and connections to the wider London road/path/park network, including the Thames Clipper which docks nearby. Car parking at extra cost close by. There are cafes, restaurants, a supermarket and pubs all within easy walking distance. Gated security with fob access, CCTV and a 24/7 security patrol. Mooring fee covers electricity & water costs plus use of marina facilities which include showers, toilets, washing machine and dryer.

KEY FEATURES

70 ft. x 12.6 ft. widebeam barge

Large double bedroom and double second bedroom

Ample storage

Generously sized kitchen / living area

Interior finished to a very high standard

Large bathroom with double shower and separate bath

Excellent transport links

Mooring charges: £20,916 per year approx.

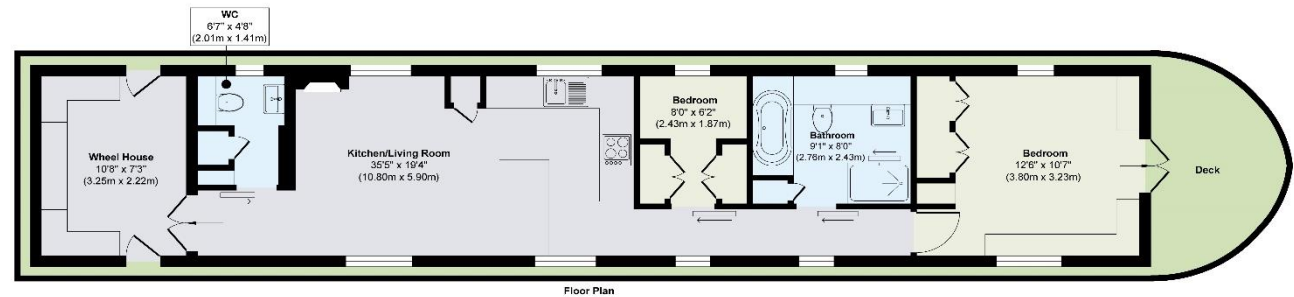
Internal area: 685 sq. ft. / 63.64 sq. m.





KEY INFORMATION

Local authority:	Royal Borough of Kensington and Chelsea
Internal area:	685 sq. ft. / 63.64 sq. m.
No. of bedrooms:	2



Approx. Gross Internal Floor Area 685 sq. ft / 63.64 sq. m

Illustration for identification purposes only, measurements are approximate, not to scale.