

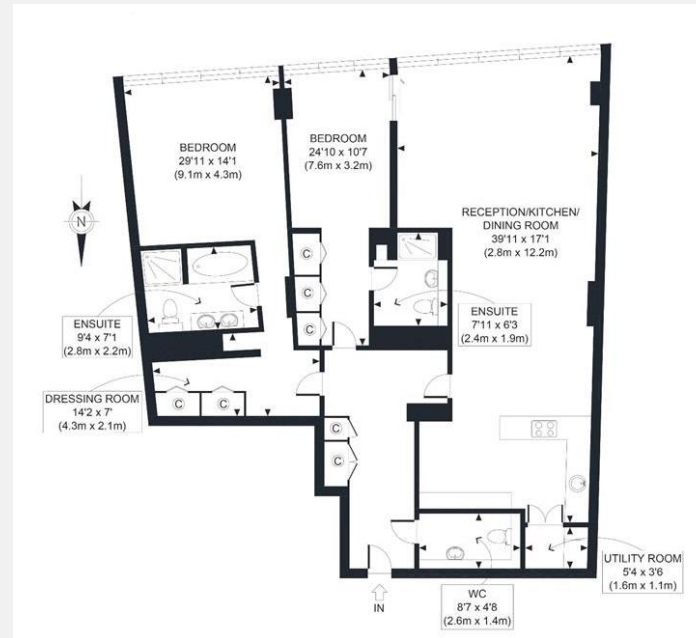


RIVERHOMES

Central London Branch
Tintagel House
92 Albert Embankment
SE1 7TY

020 7407 8000
www.riverhomes.co.uk

An outstanding Two bedroom apartment in a prestigious modern development on the water's edge of Canary Wharf. The apartment which is located on the 24th floor with south facing views to Canary Wharf and West India Quay. The apartment consists of a fully integrated open plan kitchen, spacious reception area with room to dine, large master suite with a dressing room and an ensuite bathroom, and a spacious second bedroom with fitted wardrobes and a further ensuite bathroom. The property is offered fully furnished to a very high standard and benefits from a 24 hour concierge. Located in the heart of Canary Wharf & only moments from the West India DLR station.



ENERGY PERFORMANCE CERTIFICATE

Score	Energy rating	Current	Potential
92+	A		
81-91	B	87 B	89 B
69-80	C		
55-68	D		
39-54	E		
21-38	F		
1-20	G		

KEY INFORMATION

- Local authority:** London Borough of Tower Hamlets
- Council tax:** Band G - £2,461.53 for 2021/22
- Internal area:** 1,456 sq. ft. / 135 sq. m.
- No. of bedrooms:** 2

World Waterside Ltd trading as riverhomes for themselves and its clients give notice that 1: They are not authorised to make or give any representations or warranties in relation to the property either here or elsewhere, either on their own behalf or on behalf of their client or otherwise. 2: These particulars do not form part of any offer or contract and must not be relied upon as statements or representations of fact. Any areas, measurements or distances are approximate. The text, photographs and plans are for guidance only and are not necessarily comprehensive. 3: It should not be assumed that the property has all necessary planning, building regulation or other consents and any services, equipment or facilities have not been tested. 4: Lease details, service charges, ground rent (where applicable) and council tax are given as a guide only and should be checked and confirmed by your Solicitor prior to exchange of contracts. 5: They assume no responsibility and any intending purchasers or tenants must satisfy themselves by inspection or otherwise as to the correctness of each of the statements contained within these particulars. If you require clarification of any points please contact us.