

# RIVERHOMES

Lazy Daze Hampton Hall Farm

Houseboats  
Rickmansworth

£225,000  
Available

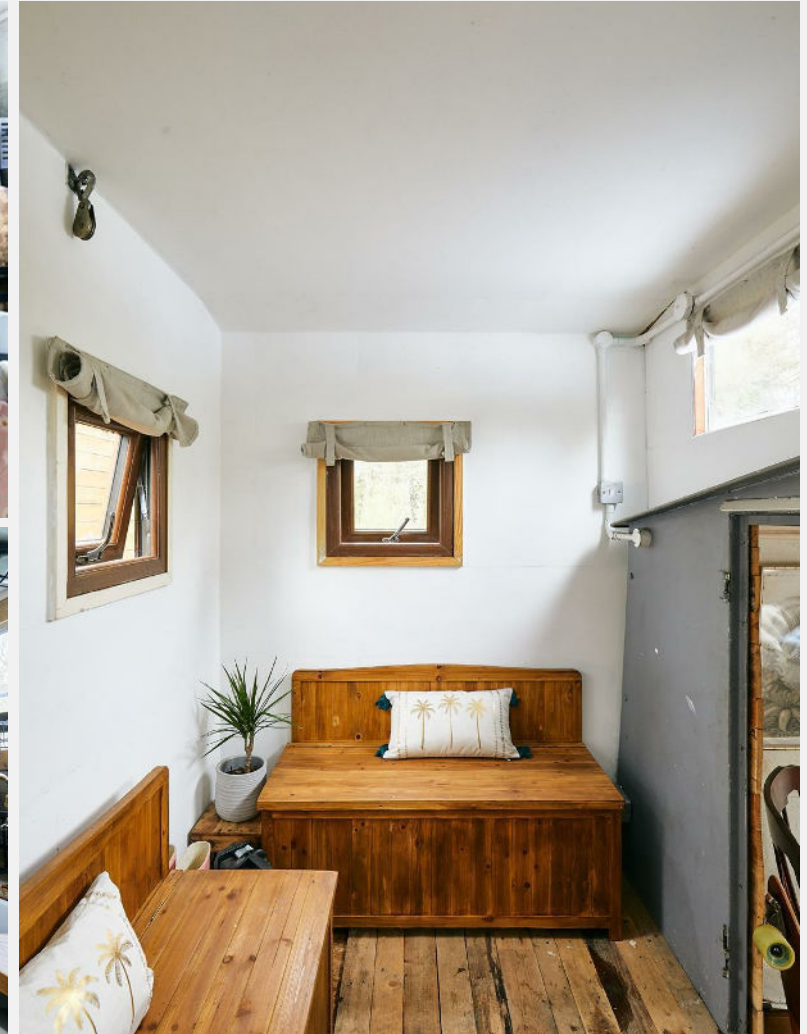




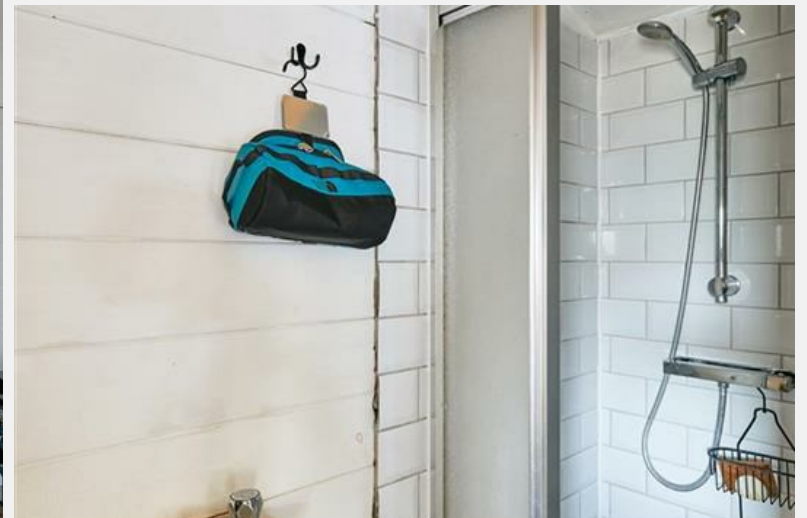
# Lazy Daze Hampton Hall Farm Houseboats Rickmansworth

## KEY FEATURES

- **Tranquil Waterfront Location:** The houseboat is moored in a serene spot just 0.9 miles from Rickmansworth Station (Metropolitan Line), adjacent to a picturesque farmer's field.
- **Open-Plan Living Space:** Features a delightful open-plan living area with a kitchen, a cozy bedroom with an en-suite, and a lobby area with ample storage.
- **Outdoor Amenities:** The mooring includes a private shed, spacious deck, and a lovely patio area, ideal for relaxing or entertaining guests.
- **Community and Convenience:** Located in a fully residential community with residents' parking, communal bin stores, and a post store.





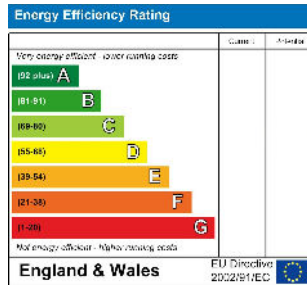


# Lazy Daze Hampton Hall Farm Houseboats Rickmansworth

West London Branch  
28 Thames Road  
London  
W4 3RJ

020 8996 0600  
www.riverhomes.co.uk

## ENERGY PERFORMANCE CERTIFICATE



## KEY INFORMATION

Local Authority:

Internal Area: 419.00 sq ft

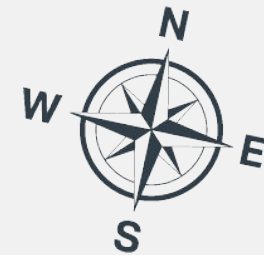
Garden Area: acre(s)

No of Bedrooms: 1

## HAMPTON HALL MOORINGS, RICKMANSWORTH WD3



Approx. Gross Internal Floor Area 419 sq. ft / 38.92 sq. m  
Illustration for identification purposes only, measurements are approximate, not for.



World Waterside Ltd trading as riverhomes for themselves and its clients give notice that 1: They are not authorised to make or give any representations or warranties in relation to the property either here or elsewhere, either on their own behalf or on behalf of their client or otherwise. 2: These particulars do not form part of any offer or contract and must not be relied upon as statements or representations of fact. Any areas, measurements or distances are approximate. The text, photographs and plans are for guidance only and are not necessarily comprehensive. 3: It should not be assumed that the property has all necessary planning, building regulation or other consents and any services, equipment or facilities have not been tested. 4: Lease details, service charges, ground rent (where applicable) and council tax are given as a guide only and should be checked and confirmed by your Solicitor prior to exchange of contracts. 5: They assume no responsibility and any intending purchasers or tenants must satisfy themselves by inspection or otherwise as to the correctness of each of the statements contained within these particulars. If you require clarification of any points please contact us.