

RIVERHOMES

Falcon Wharf
Battersea SW11

£5,000 per month
Furnished



Falcon Wharf Battersea SW11

Designed by James Burland, this beautiful three bedroom duplex has exceptional, dual aspect, views of the river. This bright, apartment is spread over the 10th and 11th floors. It has an open-plan living space, fully integrated kitchen and two winter gardens accessed from the reception room and the kitchen. On the upper level there are three spacious double bedrooms, including a large master bedroom with an en suite bathroom and winter garden. The apartment further benefits from generous amounts of built-in storage throughout, small study area, a family bathroom and a guest

cloakroom. On-site amenities include a 24 hour concierge and secure underground parking. At Falcon Wharf there is also a luxury hotel onsite which provides conference facilities, a spa and gym, restaurant and champagne bar. Falcon Wharf is an imposing riverside development located on the south bank of the River Thames in Battersea. It is conveniently located for Clapham Junction mainline station, Battersea Square and Battersea Park. The Thames Clipper provides fast access to the City and beyond neighbouring Plantation Wharf.

KEY FEATURES

Three double bedrooms

Two bathrooms

Dual aspect river views

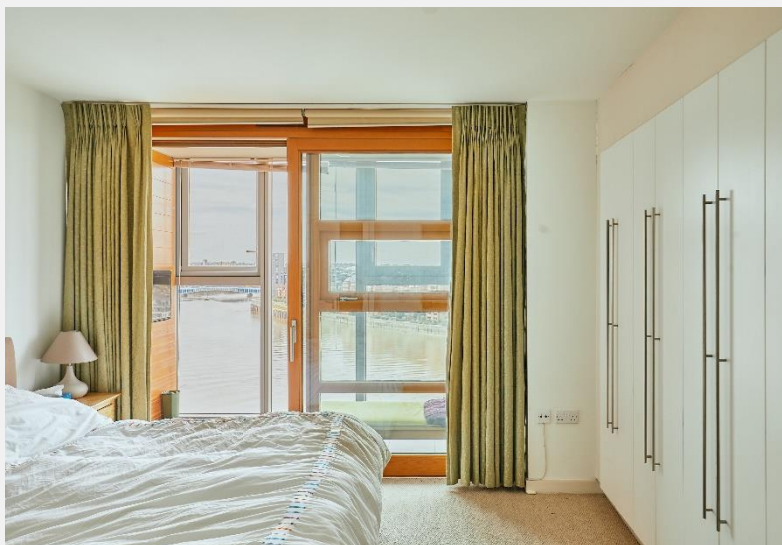
Open-plan living space

Two winter gardens

24 hour concierge service

Secure underground parking

Conveniently located close to the restaurants, shops and public transport





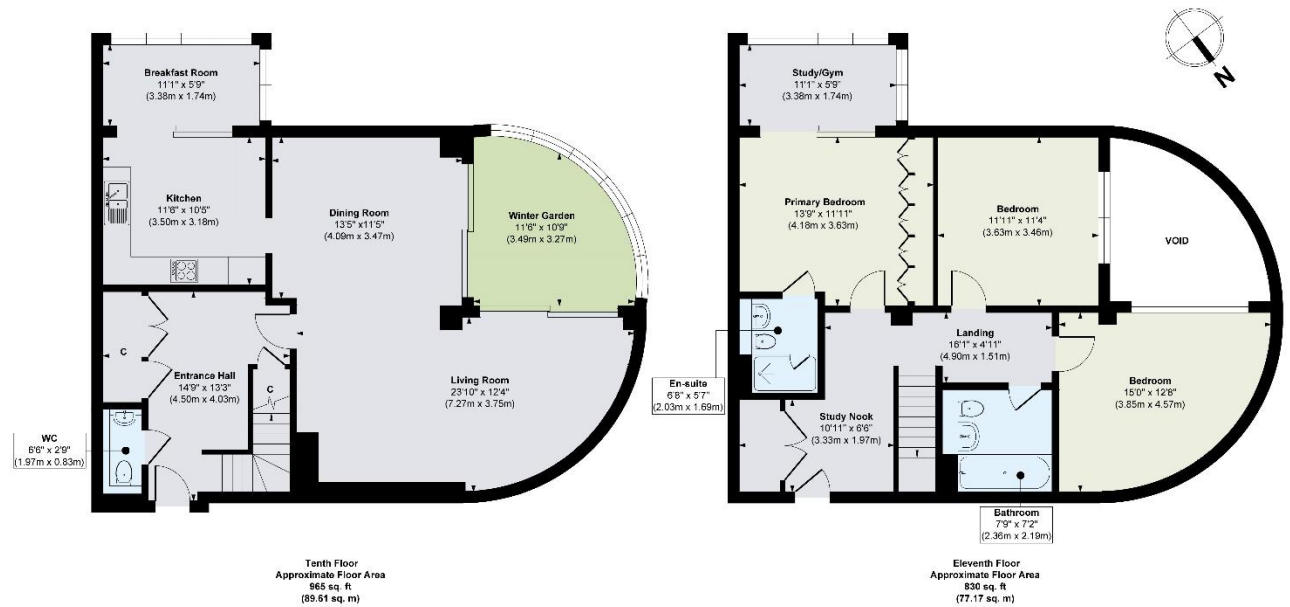
ENERGY PERFORMANCE CERTIFICATE

Score	Energy rating	Current	Potential
92+	A		
81-91	B		
69-80	C		
55-68	D	66 D	66 D
39-54	E		
21-38	F		
1-20	G		

KEY INFORMATION

Local authority:	London Borough of Wandsworth
Internal area:	1,795 sq. ft. / 166.78 sq. m.
Garden area:	Balcony
No. of bedrooms:	3
Council tax:	Band G

FALCON WHARF, BATTERSEA SW11



Approx. Gross Internal Floor Area 1795 sq. ft / 166.78 sq. m

Illustration for identification purposes only, measurements are approximate, not to scale.