

RIVERHOMES

**Tudor Court
Rotherhithe SE16**

**£2,500 per month
Furnished**



Tudor Court Rotherhithe SE16

A lovely third floor (with lift) two bedroom apartment set within a secure gated riverside development. The accommodation is spread over 800 sq. ft. and comprises a spacious and bright reception room which leads onto a private balcony with direct river views. A great size master bedroom with ensuite shower room also leading to the private balcony. A second good size double bedroom, main bathroom and a separate modern fully fitted kitchen. The apartment provides plenty of storage and further benefits from a secure parking space. Transport links can be found nearby at Rotherhithe

KEY FEATURES

Two bedrooms

Secure gated development

Private balcony

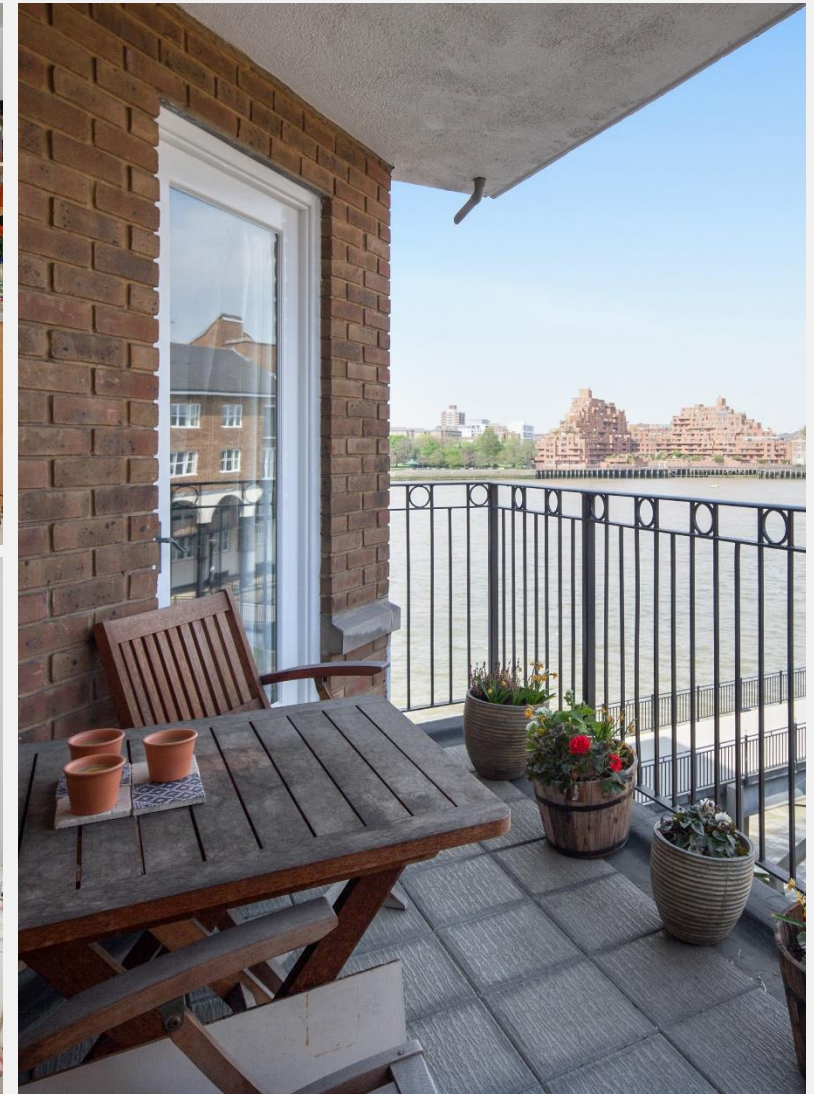
Ample storage

Secure parking space

Conveniently located close to shopping centre, restaurants and public transport

Council tax: Band E - £2,069.12 for 2023/24

Local Authority: London Borough of Southwark

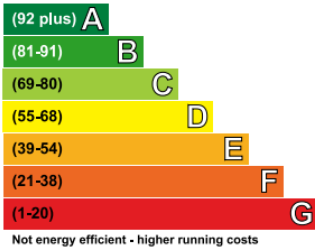




ENERGY PERFORMANCE CERTIFICATE

Energy Efficiency Rating

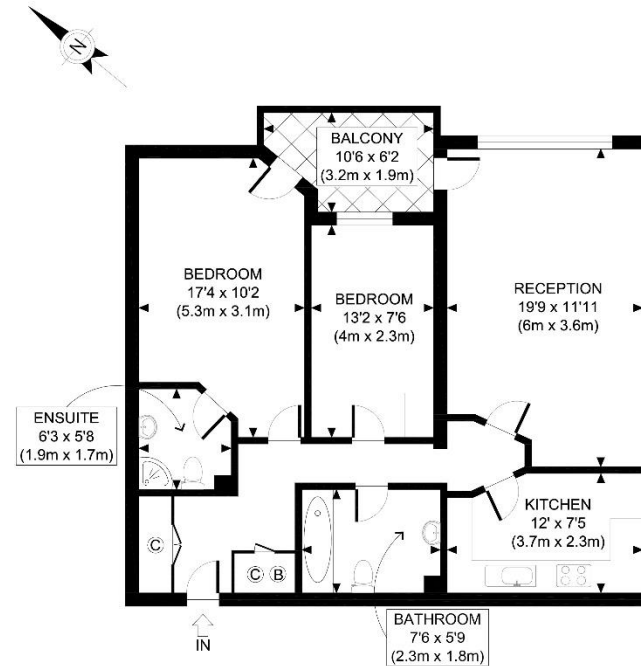
Very energy efficient - lower running costs



Current	Potential
78	83

KEY INFORMATION

Local authority:	London Borough of Southwark
Internal area:	802 sq. ft. / 75 sq. m.
Garden area:	Balcony
No. of bedrooms:	2



THIRD FLOOR
GROSS INTERNAL
FLOOR AREA 802 SQ FT

APPROX. GROSS INTERNAL FLOOR AREA 802 SQ FT / 75 SQM

Ref: Copyright **photoplan**

Disclaimer: Floor plan measurements are approximate and are for illustrative purposes only. While we do not doubt the floor plan accuracy and completeness, you or your advisors should conduct a careful, independent investigation of the property in respect of monetary valuation