

RIVERHOMES

70 Oyster Wharf Lombard Road
Battersea

£2,496 Per Month



70 Oyster Wharf Lombard Road Battersea

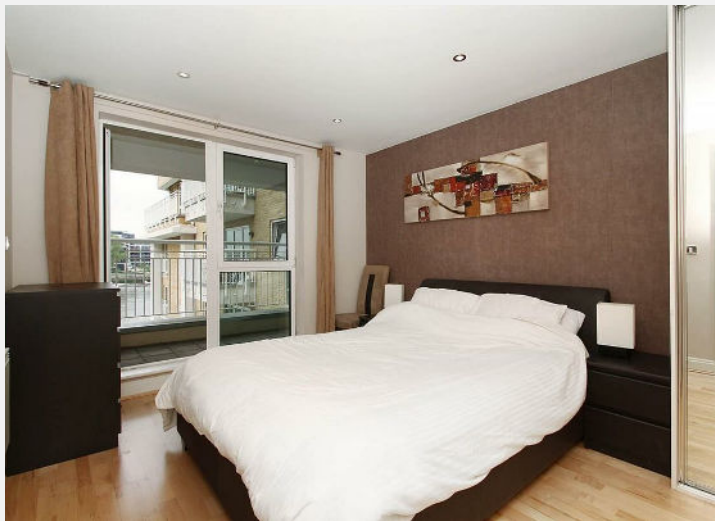
Description

Enjoy views of the River Thames from the reception room, two balconies and master bedroom of this immaculate 3rd floor apartment located in Battersea's popular Oyster Wharf development. The property comprises a modern fully-fitted kitchen, two bathrooms (one of which is en suite) and fitted wardrobes in both

bedrooms. Residents of Oyster Wharf benefit from the use of a gym, concierge service, underground parking and prompt access to Clapham Junction (which is just under a mile away). The cafes and restaurants of Battersea Square are less than half a mile from the property, as is Battersea Bridge and the beautiful spaces of Battersea Park. Offered furnished. EPC rating C. Tenant fees may apply.

KEY FEATURES

- Two Double Bedroom
- River Views
- Balcony
- Secure Parking
- Residents Gym
- Concierge

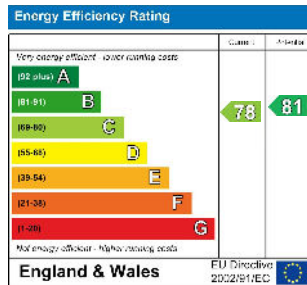


70 Oyster Wharf Lombard Road Battersea

South West & Central London Branch
1 - 3 Lower Richmond Road
London
SW15 1EJ

020 8788 6000
www.riverhomes.co.uk

ENERGY PERFORMANCE CERTIFICATE



KEY INFORMATION

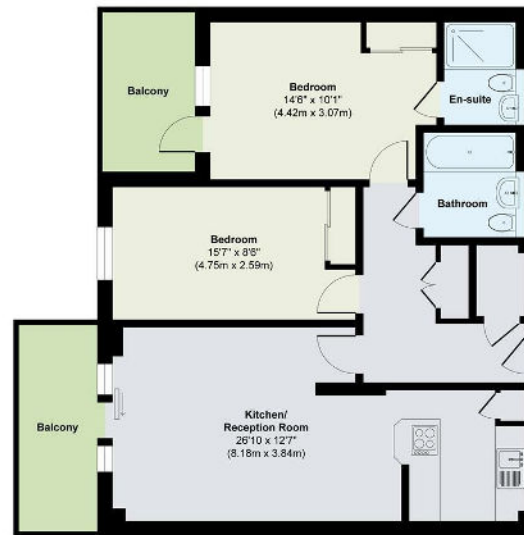
Local Authority: Wandsworth

Internal Area: sq ft

Garden Area: acre(s)

No of Bedrooms: 2

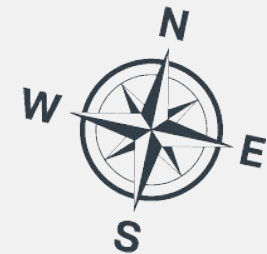
OYSTER WHARF, LOMBARD ROAD SW11



Third Floor

Approx. Gross Internal Floor Area 776 sq. ft / 72.09 sq. m

Illustration for identification purposes only, measurements are approximate, not to scale.



World Waterside Ltd trading as riverhomes for themselves and its clients give notice that 1: They are not authorised to make or give any representations or warranties in relation to the property either here or elsewhere, either on their own behalf or on behalf of their client or otherwise. 2: These particulars do not form part of any offer or contract and must not be relied upon as statements or representations of fact. Any areas, measurements or distances are approximate. The text, photographs and plans are for guidance only and are not necessarily comprehensive. 3: It should not be assumed that the property has all necessary planning, building regulation or other consents and any services, equipment or facilities have not been tested. 4: Lease details, service charges, ground rent (where applicable) and council tax are given as a guide only and should be checked and confirmed by your Solicitor prior to exchange of contracts. 5: They assume no responsibility and any intending purchasers or tenants must satisfy themselves by inspection or otherwise as to the correctness of each of the statements contained within these particulars. If you require clarification of any points please contact us.