

# RIVERHOMES

Riverside Quarter  
Wandsworth SW18

Offers In Excess Of  
£700,000  
Leasehold



## Riverside Quarter Wandsworth SW18

This riverside apartment overlooking the Thames combines modern design with practical living. Recently refurbished for the sales market, the property now features brand-new wood flooring in the hallway and reception room, fresh carpeting in the bedrooms, and a full repaint throughout. The apartment is filled with natural light and offers a spacious open-plan layout, including a modern kitchen and reception area, two double bedrooms, two bathrooms, and a large balcony with views of the river and city skyline. It is also equipped with a remote-controlled heating system, enabling temperature adjustments via smartphone.

Residents have access to private on-site amenities, including two gyms, a swimming pool, a concierge service, and secure underground parking.

Located in Riverside Quarter, the apartment is close to the shops, restaurants, and bars of Putney and Wandsworth Town. It also provides access to Fulham and Chelsea's shopping areas and green spaces such as Barnes, Kew, and Richmond. Transport links include East Putney underground station (District Line), Putney overground station (approximately 20 minutes to Waterloo), and the Riverbus for a scenic commute into Central London. The nearby A3 offers straightforward access for travel outside the city.

### KEY FEATURES

**2 bedrooms**

**2 bathrooms**

**Additional dressing room**

**Private balcony**

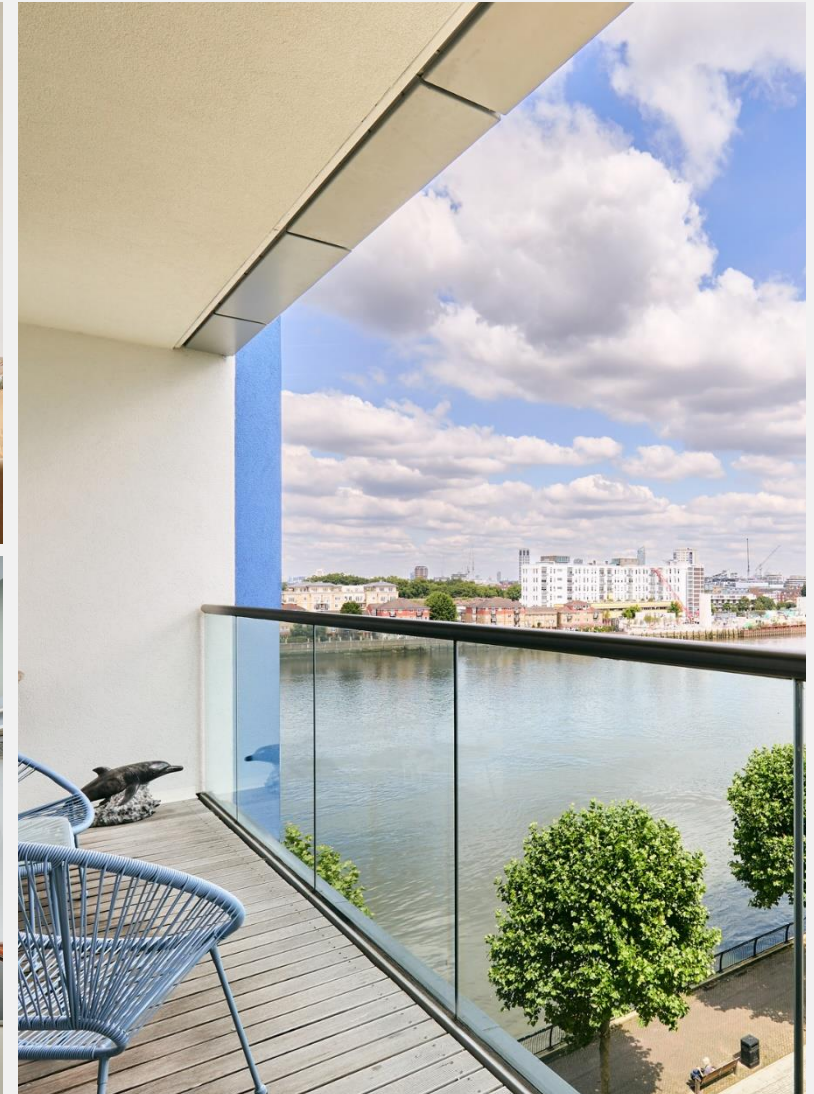
**Concierge service**

**Access to 2 gyms and swimming pool**

**Secure underground parking**

**Conveniently located close to restaurants,  
shops and public transport**

**Lease length: 978 years remaining**





## ENERGY PERFORMANCE CERTIFICATE

Score	Energy rating	Current	Potential
92+	A		
81-91	B	83 B	84 B
69-80	C		
55-68	D		
39-54	E		
21-38	F		
1-20	G		

## KEY INFORMATION

<b>Local authority:</b>	Richmond Upon Thames
<b>Internal area:</b>	818 sq. ft. / 76.01 sq. m.
<b>Garden area:</b>	Balcony
<b>No. of bedrooms:</b>	2
<b>Council tax:</b>	Band F
<b>Service charges:</b>	£8,100 per year approx.

