

RIVERHOMES

Hartington Road
Chiswick W4

Guide Price £4,250,000
Freehold



Hartington Road Chiswick W4

A grand seven bedroom semi-detached riverside home with a 250 ft. mature tiered garden leading down to the water's edge with decking and private slipway. Located on Hartington Road, this recently refurbished sumptuous family home is offered to the market by RiverHomes. 3,600 sq. ft. of living space is laid out over three floors and provides every need for a large family.

Off-street parking for two to three cars (size-dependent) leads into its entrance hall and double reception rooms, utility room and toilet. A stunning modern kitchen with floor-to-ceiling French doors leads out to the expansive garden and river beyond.





Hartington Road Chiswick W4

The first floor comprises the master bedroom with dressing room and en suite bathroom; three further bedrooms and family bathroom. The second floor consists of two double bedrooms, one with access out to a sun terrace, and a Jack and Jill bathroom. Top floor consists of large potential bedroom / office with eaves storage.

The property is located close to the A4 / M3 and the A316 / M3 for ease of access both into and out of Central London. Heathrow airport is just a 20 minute drive away, and the Chiswick High Road will cater for all of your everyday needs.

KEY FEATURES

7 bedrooms

3 bathrooms

Semi-detached riverside family home

Floor-to-ceiling French doors

250 ft. mature tiered garden

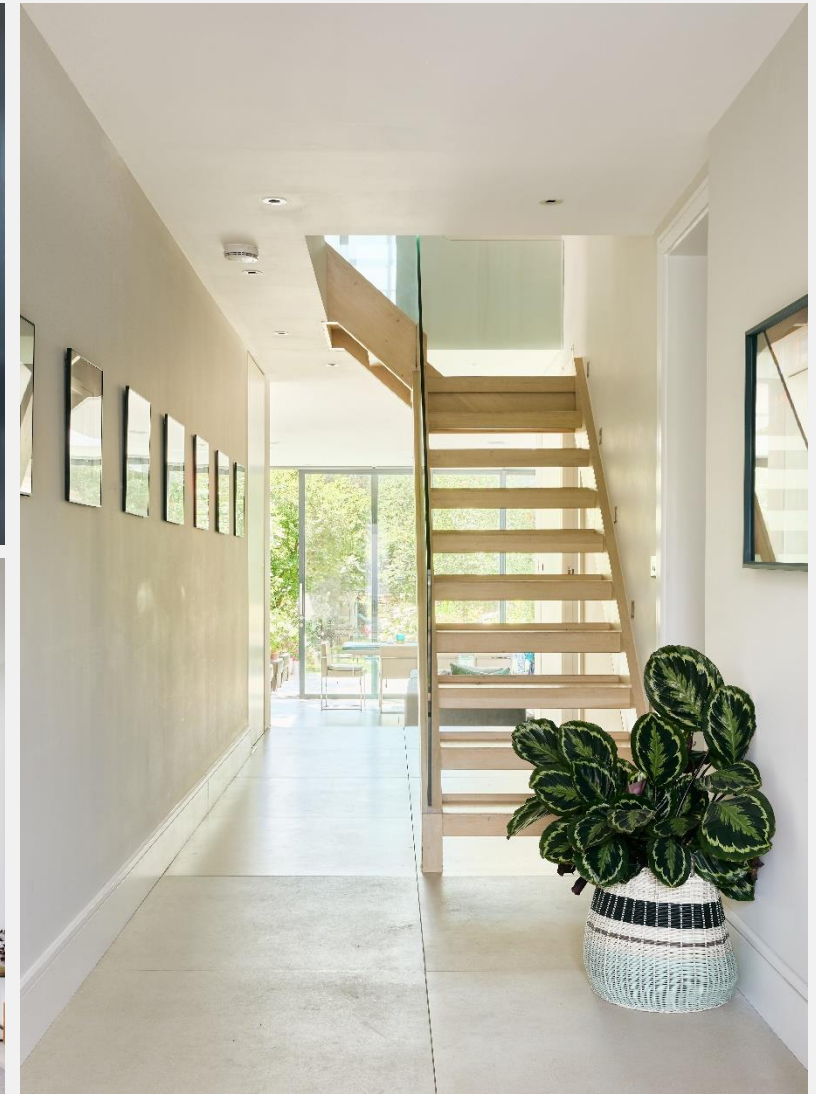
Decking and private slipway

3,600 sq. ft. of living space

Off-street parking for two / three cars

Sun terrace on second floor

Close to A4 / M4 & A316 / M3 for transport



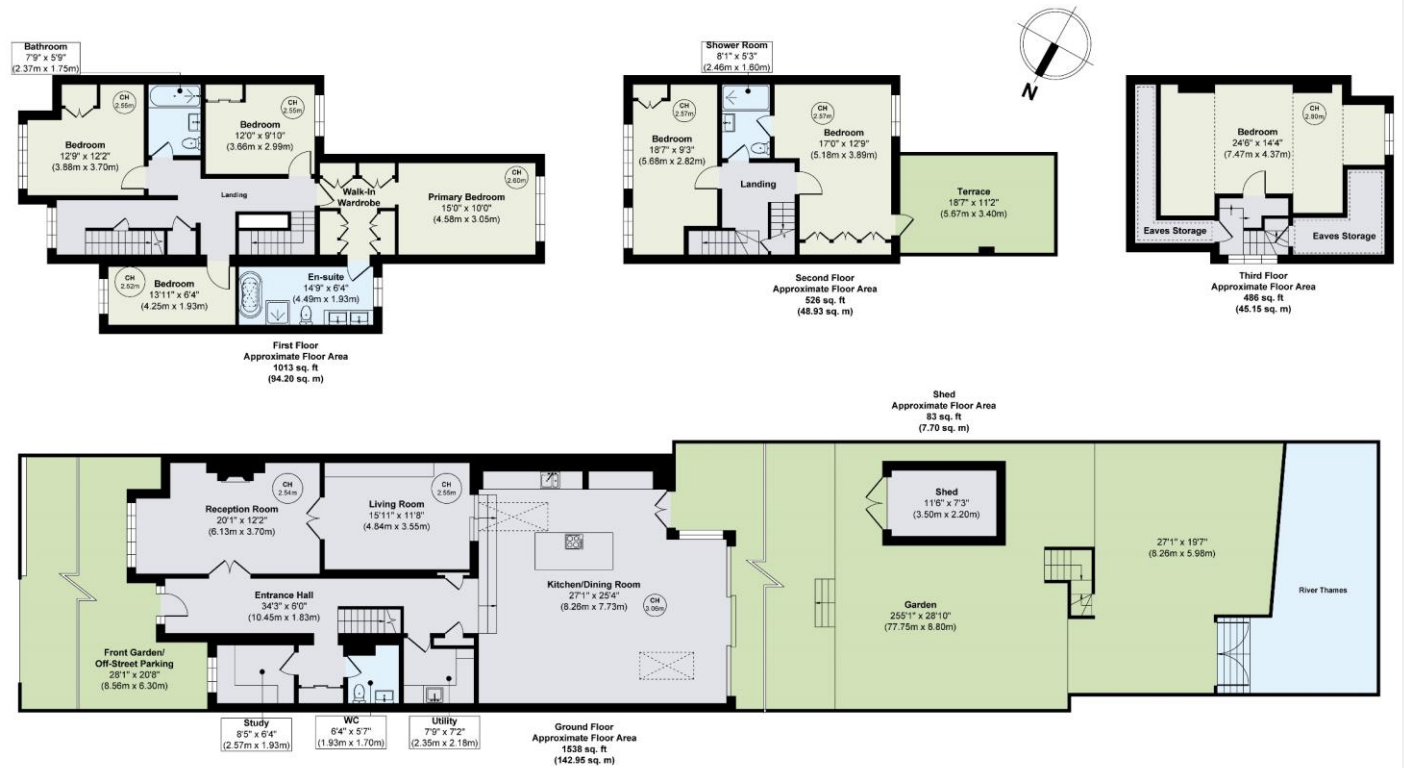


ENERGY PERFORMANCE CERTIFICATE

Score	Energy rating	Current	Potential
92+	A		
81-91	B		
69-80	C		80 C
55-68	D	66 D	
39-54	E		
21-38	F		
1-20	G		

KEY INFORMATION

Local authority: London Borough of Hounslow
Internal area: 3,648 sq. ft. / 338.93 sq. m.
Council tax band: H
No. of bedrooms: 7





RIVERHOMES

West London Branch
28 Thames Road
London
W4 3RJ

020 8995 0500
www.riverhomes.co.uk



World Waterside Ltd trading as riverhomes for themselves and its clients give notice that 1: They are not authorised to make or give any representations or warranties in relation to the property either here or elsewhere, either on their own behalf or on behalf of their client or otherwise. 2: These particulars do not form part of any offer or contract and must not be relied upon as statements or representations of fact. Any areas, measurements or distances are approximate. The text, photographs and plans are for guidance only and are not necessarily comprehensive. 3: It should not be assumed that the property has all necessary planning, building regulation or other consents and any services, equipment or facilities have not been tested. 4: Lease details, service charges, ground rent (where applicable) and council tax are given as a guide only and should be checked and confirmed by your Solicitor prior to exchange of contracts. 5: They assume no responsibility and any intending purchasers or tenants must satisfy themselves by inspection or otherwise as to the correctness of each of the statements contained within these particulars. If you require clarification of any points please contact us.