

RIVERHOMES

Riverside Quarter
Wandsworth SW18

£1,450,000
Leasehold



Riverside Quarter Wandsworth SW18

Discover the epitome of luxury living in this sought-after Thames-side development. Situated opposite Fulham's renowned Hurlingham Club, Riverside Quarter offers a premier riverside location just minutes from the dining and shopping delights of Wandsworth Town Centre. This exquisite three-bedroom apartment provides easy access to Putney High Street, with its variety of riverside restaurants, bars, and cafes.

This riverfront apartment is a rare find within Riverside Quarter. The spacious, open-plan kitchen and reception area open onto a private balcony, offering spectacular river views and a perfect spot to enjoy the picturesque scenery of the Hurlingham Club Gardens. The master bedroom features an en suite bathroom and access to a second private balcony. A second en suite

bedroom and a third bedroom with a separate shower room complete the accommodation. All rooms are equipped with air cooling systems.

Residents of Riverside Quarter enjoy top-tier security and concierge services, two on-site gyms, a swimming pool, and secure underground parking with an allocated space for this apartment. Embrace the luxury and convenience of Riverside Quarter living, where urban sophistication meets serene riverside beauty.

Conveniently positioned for central London, residents can utilize Wandsworth Town overground station (0.9 miles), Putney overground station (1 mile), and East Putney underground station (0.7 miles). The Riverbus also services the development, offering a scenic commute into the City.

KEY FEATURES

3 bedrooms

3 bathrooms

2 private balconies

Open-plan reception and kitchen

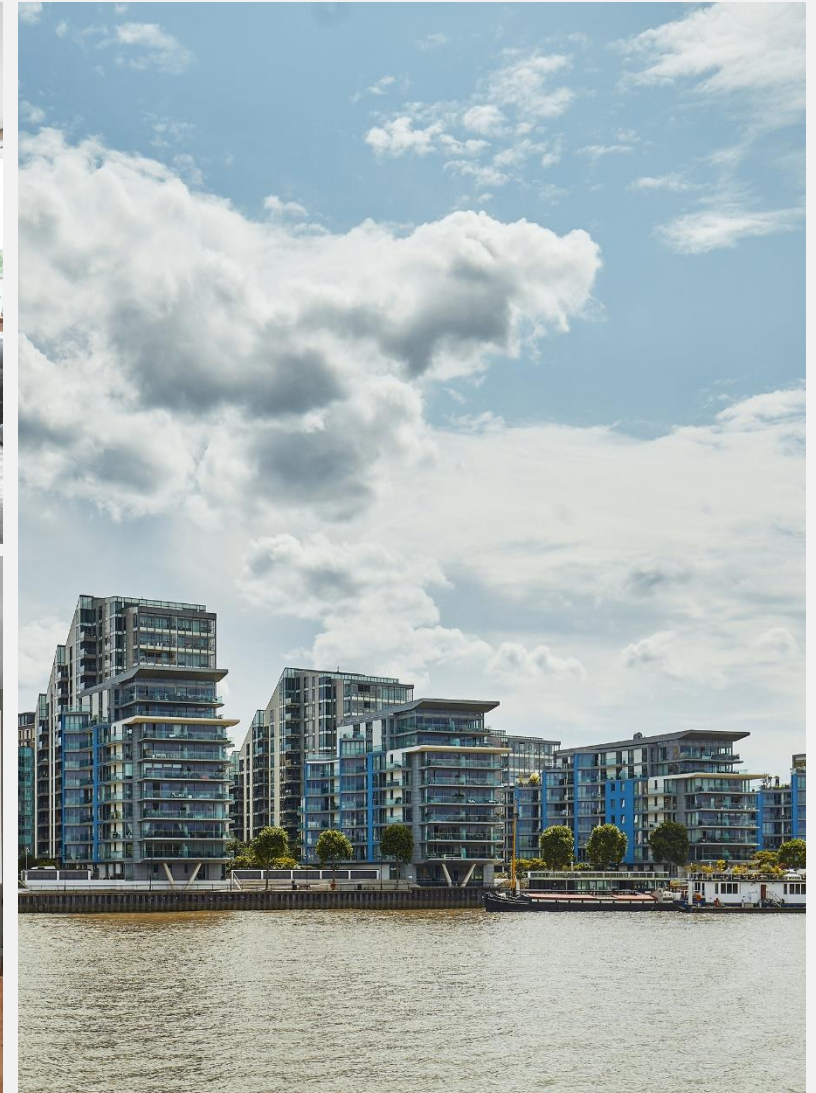
Ample storage

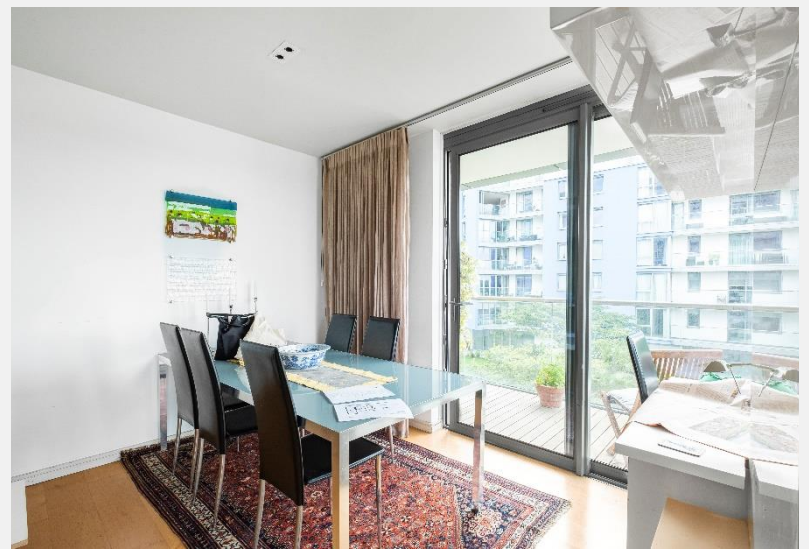
Access to 2 resident gyms and 1 swimming pool

Secure underground parking

Concierge service

Conveniently located close to shops, restaurants and public transport





ENERGY PERFORMANCE CERTIFICATE

| Score | Energy rating | Current | Potential |
|-------|---------------|---------|-----------|
| 92+ | A | | |
| 81-91 | B | | |
| 69-80 | C | 80 C | 80 C |
| 55-68 | D | | |
| 39-54 | E | | |
| 21-38 | F | | |
| 1-20 | G | | |

KEY INFORMATION

| | |
|--|------------------------------|
| Local authority: | London Borough of Wandsworth |
| Internal area: | 1,575 sq. ft. / 146.3 sq. m. |
| Garden area: | 2 balconies |
| No. of bedrooms: | 3 |
| Council tax: | Band H |
| Service charges inc. ground rent: | £12,000 per year approx. |
| Lease length: | 978 years remaining |

