

# RIVERHOMES

Putney Wharf  
Putney SW15

Offers in excess of  
£750,000  
Leasehold



## Putney Wharf Putney SW15

This two bedroom, 3rd floor apartment is in the very prestigious Putney Wharf development. There is a large reception room with stripped wooden floors leading to a balcony with east facing views over the River Thames. The fully fitted kitchen has all integrated appliances. The master bedroom has a luxury en-suite shower room and there's a second double bedroom - both bedrooms have wonderful river views. There is also a family bathroom. The apartment comes with lift access, underground parking, use of a communal gym and 24 hour concierge service. The apartment is close to Putney High Street where you'll find the National Rail Station - with trains to Waterloo. The closest underground station is Putney Bridge (District Line). There is also an extensive bus network and the number 22 bus goes directly to Oxford Circus. The Thames Clippers service runs down the river from Putney Pier to Blackfriars and beyond.

### KEY FEATURES

**2 bedrooms**

**2 bathrooms**

**Large reception room with access to private balcony**

**Fully fitted kitchen with integrated appliances**

**Underground parking**

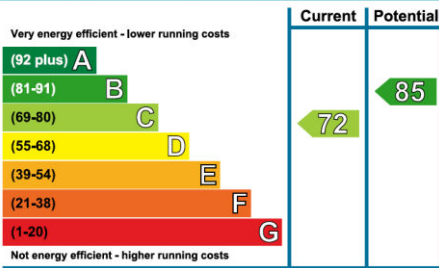
**Communal gym and 24-hour concierge service**





## ENERGY PERFORMANCE CERTIFICATE

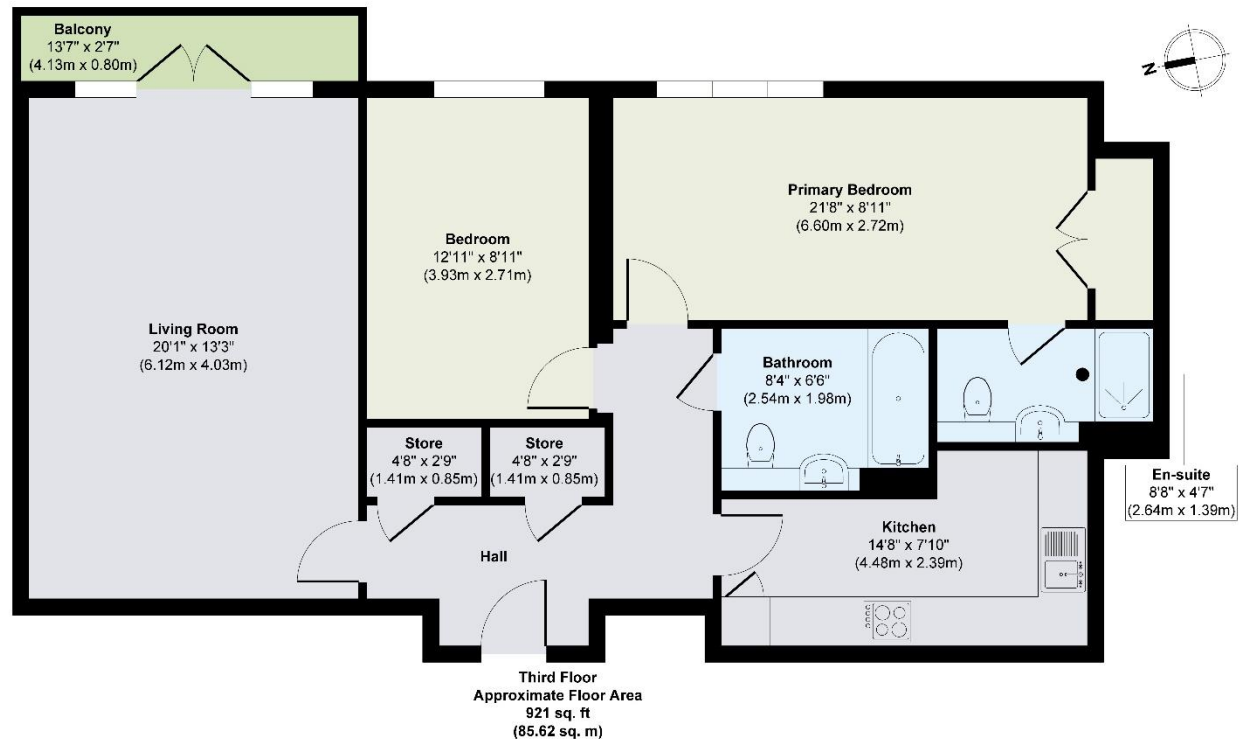
### Energy Efficiency Rating



## KEY INFORMATION

<b>Local authority:</b>	London Borough of Wandsworth
<b>Internal area:</b>	921 sq. ft. / 85.62 sq. m
<b>Garden area:</b>	Balcony
<b>No. of bedrooms:</b>	2
<b>Council tax:</b>	Band G
<b>Service charge:</b>	£5,956 per year (inc. ground rent)
<b>Lease length:</b>	977 years remaining

## BREWHOUSE LANE PUTNEY SW15



**Approx. Gross Internal Floor Area 921 sq. ft / 85.62 sq. m**

Illustration for identification purposes only, measurements are approximate, not to scale.  
Produced by Elements Property