

RIVERHOMES

**Cheyne Walk
Chelsea SW10**

**£7,366 per month
Furnished or Unfurnished**



Cheyne Walk Chelsea SW10

Situated at prestigious Cheyne Walk Moorings, Viceroy is a beautiful bespoke houseboat which has been thoughtfully converted and finished to the highest standard throughout. Benefiting from direct river views and split over two levels, this stylish floating home comprises Two Double Bedrooms, with master en-suite and family bathroom. The open plan kitchen/living space offers direct access to the spacious deck area. The fully integrated kitchen offers a large range-style oven, induction hob, dishwasher and fridge freezer. There is a separate utility / laundry room which offers additional storage. Further benefits include air conditioning and climate control. The bathrooms have underfloor heating. With all the comforts of a typical home such as mains electricity, water, sewerage and telephone services, all residents of this charming mooring also benefit from a night watchman, CCTV service,

Concierge/Porter service and an on-site maintenance team. Cheyne Walk is located close to a number of transport options, the green spaces of Battersea park and shopping and leisure amenities at Kings Road and Sloane Square.

KEY FEATURES

2 large double bedrooms both with en-suite bathrooms

Large open plan reception room with dining area both with direct river views

Large fully equipped kitchen with induction hob, large range over, tall fridge freezer, dishwasher and river views

Private terrace off the reception room

Separate utility room with washing machine, tumble dryer and sink

AC in bedrooms and underfloor heating in tiled areas

All utilities are connected directly to the mains like a land based property

High speed internet

On site services include – full time reception desk; post and delivery collection; refuse collection from the boat twice a week; night watchman; CCTV; daily maintenance and on-site experienced support team

Pets are allowed



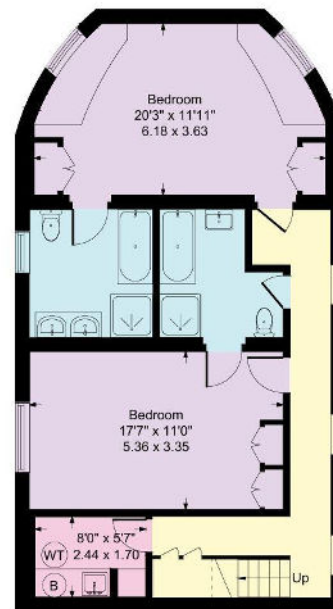


KEY INFORMATION

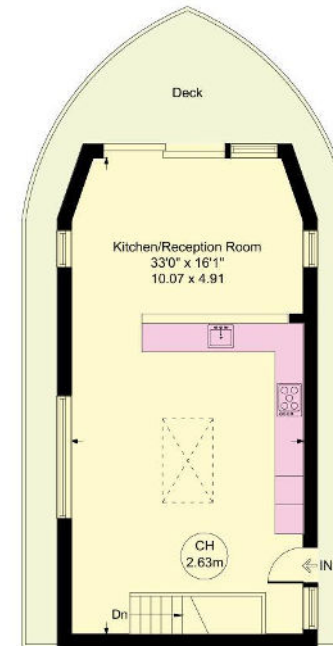
Local authority:	Royal Borough of Kensington and Chelsea
Council tax band:	F
Council tax:	£2,621.77 per annum approx.
Internal area:	1,321 sq. ft. / 122.69 sq. m.
Garden area:	Spacious deck area
No. of bedrooms:	2

Chelsea Yacht & Boat Co Ltd, SW10
Approximate Gross Internal Area = 1321 sq ft / 122.69 sq m

CH = Ceiling Height



Lower Deck
Approximate Floor Area
795 sq. ft
(73.86 sq. m)



Upper Deck
Approximate Floor Area
526 sq. ft
(48.83 sq. m)

Illustration for identification purposes only,
measurements are approximate, not to scale. (ID574)