

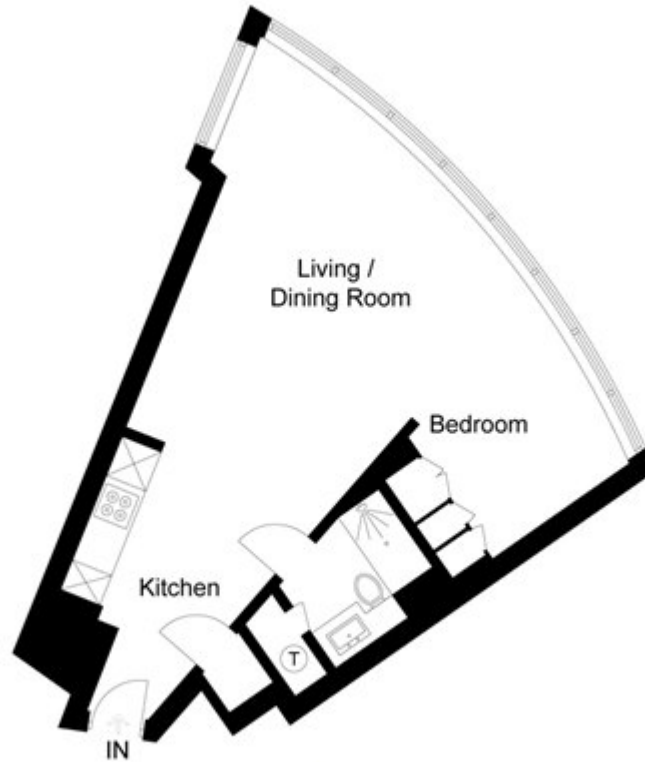
# St George Wharf, London

£800 PW

---

## St George Wharf, SW8

Approximate Gross Internal Area = 59.7 sq m / 643 sq ft



### Fifteenth floor



Chase Evans makes every attempt to ensure accuracy, however all measurements are approximate. All aspects of this floor plan are for illustrative purposes only and not to scale. Errors and omissions excepted (E&OE).