

RIVERHOMES

Brighton Marina Village
Brighton BN2

£178,000
Leisure mooring



Brighton Marina Village Brighton BN2

Write Get ready for a lifestyle on the water with the fabulous new M350 Series! This new contemporary craft enjoys a spacious open plan living/kitchen area leading onto the good sized deck for alfresco dining.

The double bedroom benefits from fitted storage and access to a further deck and there is a full shower room. The living area delights in its brightness with windows to each side and double doors opening to the spacious deck allowing light and air to flow through. The engineered wood floor provides durability and

enhances the contemporary ambience along with recessed spot lighting and stainless steel fittings.

With stylish fitted units the kitchenette is compact but designed with everything you need. There is a gas hob with an extractor hood, integrated fridge and electric oven. Work tops with matching upstands and stainless steel sink with mixer tap.

The bedroom continues with the contemporary theme with the gorgeous engineered wood floors complimented with recessed spot lights





Brighton Marina Village Brighton BN2

and stainless steel fittings and fitted storage. With picture windows and a door leading to a further deck this truly is a perfect spot to take in the serenity of the water.

The shower room is of good proportion with the suite comprising of the shower cubicle with glazed door, hand basin with mixer tap, low level WC and chrome heated towel rack. Recessed ceiling lights and engineered wood floor.

The boats benefit from mains drainage to take care of the foul waste. Gas is provided by means

of a bottle and electric is supplied via hook up to a meter point. There is a large hot water tank on board and wall mounted panel heaters. All walls are plastered and the crafts are insulated meeting U values building regulations. The doors and windows are double glazed and the warranties are as follows:

- 12 month defects period
- 20 year design life on structure
- 10 year design life on pontoons
- 10 year design life on cladding

KEY FEATURES

New one bedroom houseboat

Deck for al fresco dining

Spacious open plan living and kitchen area

Full shower room

Contemporary bedroom with further deck

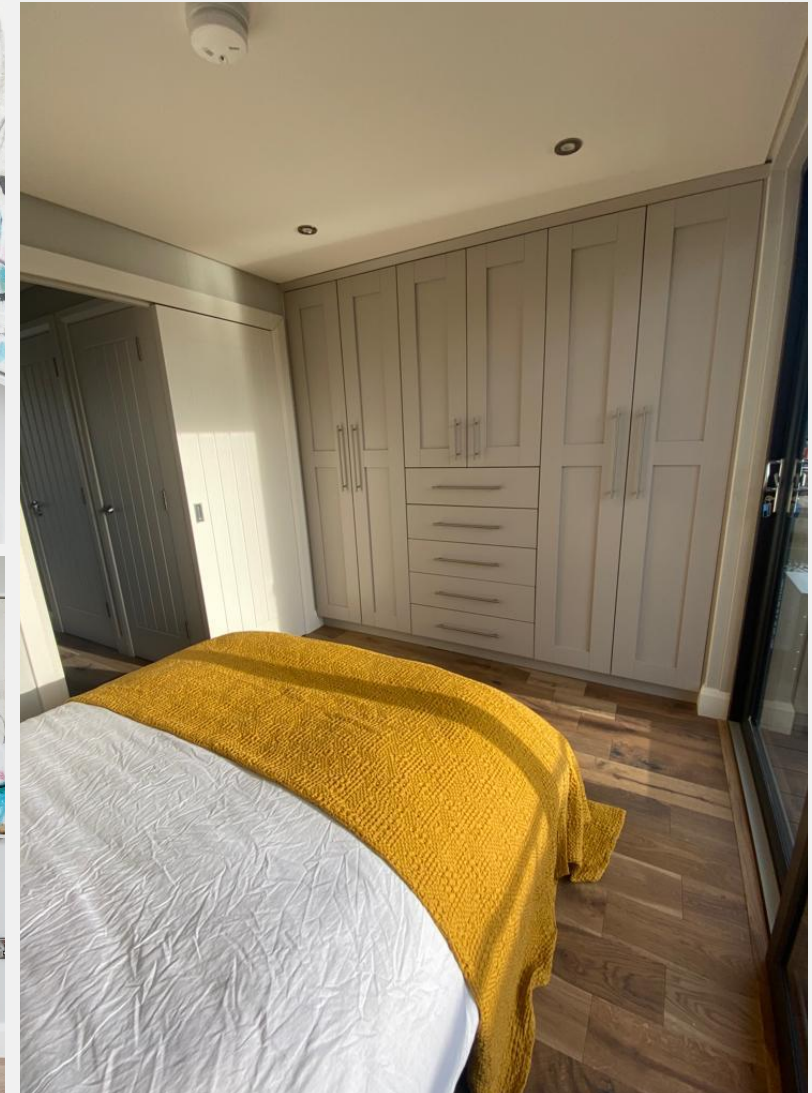
Mains drainage

Bottled gas

Electric hook up

Warranties:

- 12 month defects period
- 20 year design life on structure
- 10 year design life on pontoons
- 10 year design life on cladding





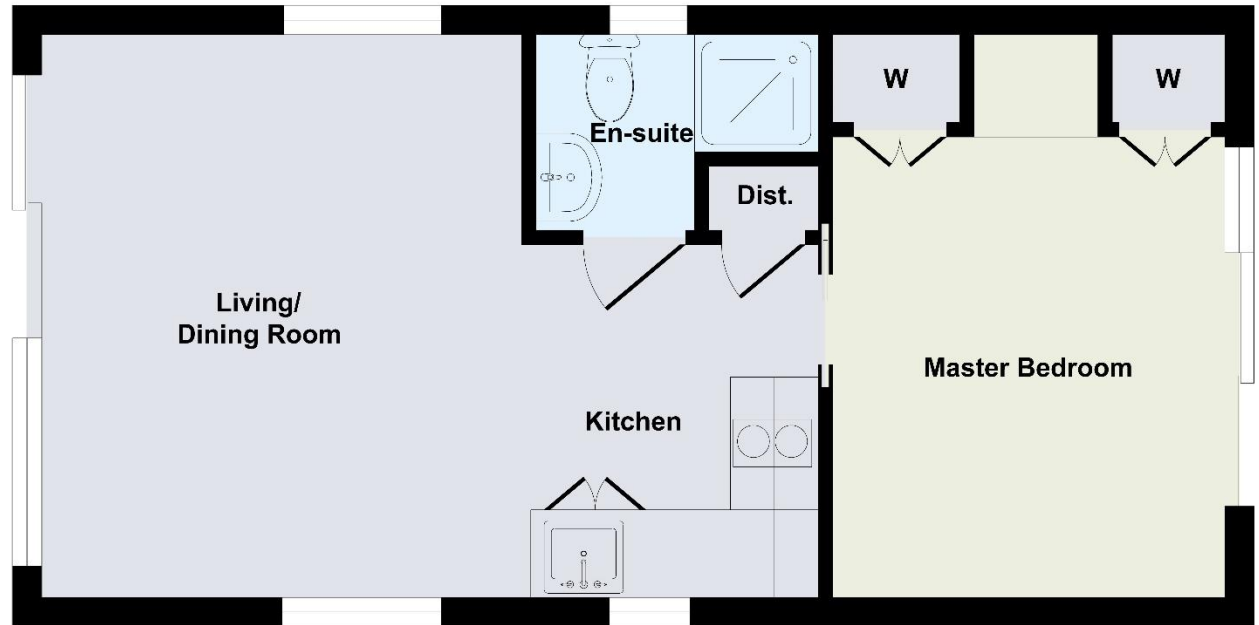
Brighton Marina Village
Brighton BN2

£178,000
Leisure mooring



KEY INFORMATION

Local authority: Brighton & Hove
Internal area: 335 sq. ft. / 31.16 sq. m.
No. of bedrooms: 1
Mooring charge: £9,222 approx. per annum



Floor Plan
Approximate Floor Area
335 sq. ft
(31.16 sq. m)

Approx. Gross Internal Floor Area 335 sq. ft / 31.16 sq. m
Illustration for identification purposes only, measurements are approximate, not to scale.



RIVERHOMES

Greater London Branch
75 High Street
Teddington
TW11 8HG

020 8977 4500
www.riverhomes.co.uk



World Waterside Ltd trading as riverhomes for themselves and its clients give notice that 1: They are not authorised to make or give any representations or warranties in relation to the property either here or elsewhere, either on their own behalf or on behalf of their client or otherwise. 2: These particulars do not form part of any offer or contract and must not be relied upon as statements or representations of fact. Any areas, measurements or distances are approximate. The text, photographs and plans are for guidance only and are not necessarily comprehensive. 3: It should not be assumed that the property has all necessary planning, building regulation or other consents and any services, equipment or facilities have not been tested. 4: Lease details, service charges, ground rent (where applicable) and council tax are given as a guide only and should be checked and confirmed by your Solicitor prior to exchange of contracts. 5: They assume no responsibility and any intending purchasers or tenants must satisfy themselves by inspection or otherwise as to the correctness of each of the statements contained within these particulars. If you require clarification of any points please contact us.