

# RIVERHOMES

Bates Wharf  
Chertsey KT16

£198,000  
Leisure mooring



**Bates Wharf  
Chertsey KT16**

This M Series vessel is 12 m. long and 4.5 m. wide, this model has been designed to give maximum interior space, while still fitting within a standard marina berth and with the added bonus of a 2 m. balcony front and rear ideal for al fresco entertaining. Glass windows along the full width of the front, with sliding doors for access, creates a bright airy living / dining / kitchen space bathed in natural light. The M350 can either have one larger master bedroom, or a double and a separate single bedroom layout.

The kitchen, bathroom and other internal fittings are of high specification, ensuring the same standard of living on water as on land.





## **Bates Wharf Chertsey KT16**

Bates Wharf is a charming 110 berth marina situated amongst open meadow land on the River Thames. Chertsey is a town in Surrey, on the River Thames and its tributary rivers such as the River Bourne. It can be accessed by road from junction 11 of the M25.

It shares borders with Staines, Laleham, Shepperton, Addlestone, Woking, Thorpe and Egham. Bates Wharf lies 20 miles southwest of central London, close to the M3 and the M25. The town is served by Chertsey railway station. It is located on the Chertsey branch of the Waterloo to Reading Line which is operated by South West Trains.

### **KEY FEATURES**

**New Build**

**One bedroom houseboat**

**Full kitchen**

**Shower room**

**Two balconies**

**Charming Marina amongst open meadow**





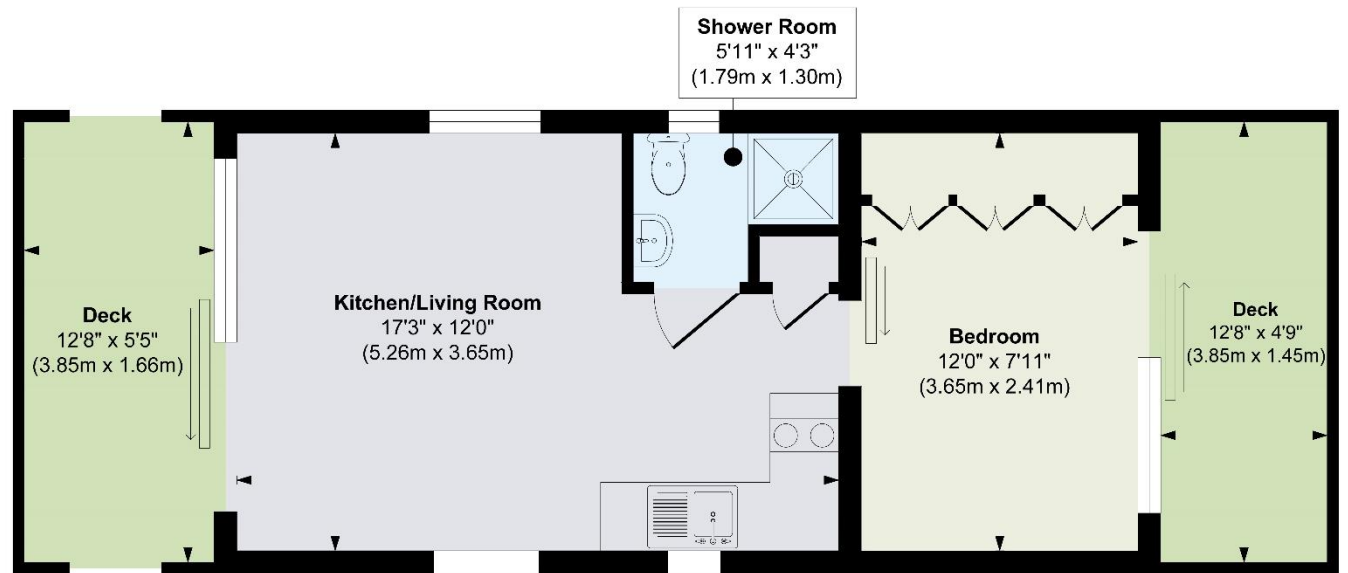
**Bates Wharf  
Chertsey KT16**

£198,000  
Leisure mooring



**KEY INFORMATION**

- Local authority:** Runnymede Borough Council
- Internal area:** 309 sq. ft. / 28.72 sq. m.
- No. of bedrooms:** 1
- Mooring charge:** £8,820 approx. per annum
- Service charge:** £900 approx. per annum



**Floor Plan**  
Approximate Floor Area  
309 sq. ft  
(28.72 sq. m)



