

# RIVERHOMES

21 Shearwater Court Star Place

London

£4,247 Per Month



## 21 Shearwater Court Star Place London

### Description

Enjoy views of the tranquil waters of the stunning St. Katharine Docks - a quiet oasis within the heart of The City - from the private balcony of this 1,000 sq. ft. / 95 sq. m. 2 bedroom, 2 bathroom apartment with reception room, modern integrated kitchen and abundant storage. Residents benefit from a concierge service, underground parking and immediate access to a range of restaurants and cafes within The Docks itself. Tower Hill is just a quarter of a mile away and offers District Line, Circle Line and DLR

services providing links to every corner of London. A River Bus service operates from Tower Bridge which is adjacent to the development and provides prompt access to Canary Wharf to the east, or The South Bank to the west. This spacious home could be perfect as a pied-a-terre or permanent base for any individual who seeks a quiet corner in the heart of The City. Offered furnished. EPC rating C. Tenant fees apply.

### KEY FEATURES



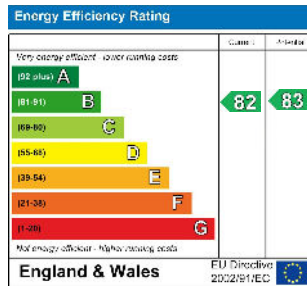


# 21 Shearwater Court Star Place London

South West & Central London Branch  
1 - 3 Lower Richmond Road  
London  
SW15 1EJ

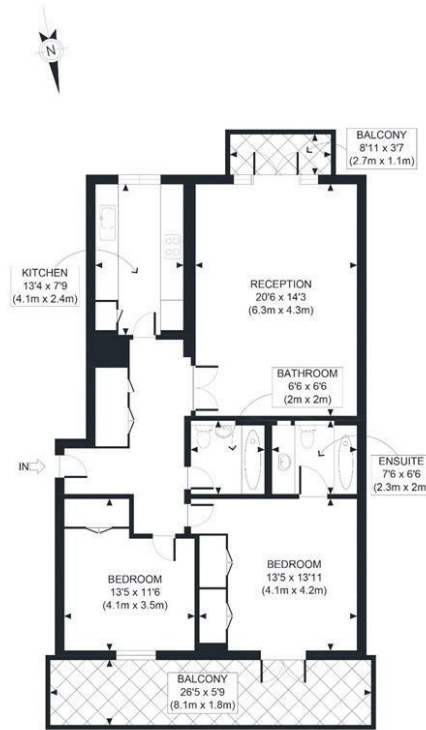
020 8788 6000  
www.riverhomes.co.uk

## ENERGY PERFORMANCE CERTIFICATE



## KEY INFORMATION

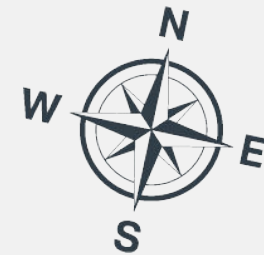
Local Authority: Tower Hamlets  
Internal Area: sq ft  
Garden Area: acre(s)  
No of Bedrooms: 2



SECOND FLOOR  
GROSS INTERNAL  
FLOOR AREA 1001 SQ FT

APPROX. GROSS INTERNAL FLOOR AREA 1001 SQ FT / 92 SQM  
Ref: Copyright **photoplan**

Disclaimer: Floor plan measurements are approximate and are for illustrative purposes only. While we do not doubt the floor plan accuracy and completeness, you or your advisors should conduct a careful, independent investigation of the property in respect of monetary valuation



World Waterside Ltd trading as riverhomes for themselves and its clients give notice that 1: They are not authorised to make or give any representations or warranties in relation to the property either here or elsewhere, either on their own behalf or on behalf of their client or otherwise. 2: These particulars do not form part of any offer or contract and must not be relied upon as statements or representations of fact. Any areas, measurements or distances are approximate. The text, photographs and plans are for guidance only and are not necessarily comprehensive. 3: It should not be assumed that the property has all necessary planning, building regulation or other consents and any services, equipment or facilities have not been tested. 4: Lease details, service charges, ground rent (where applicable) and council tax are given as a guide only and should be checked and confirmed by your Solicitor prior to exchange of contracts. 5: They assume no responsibility and any intending purchasers or tenants must satisfy themselves by inspection or otherwise as to the correctness of each of the statements contained within these particulars. If you require clarification of any points please contact us.