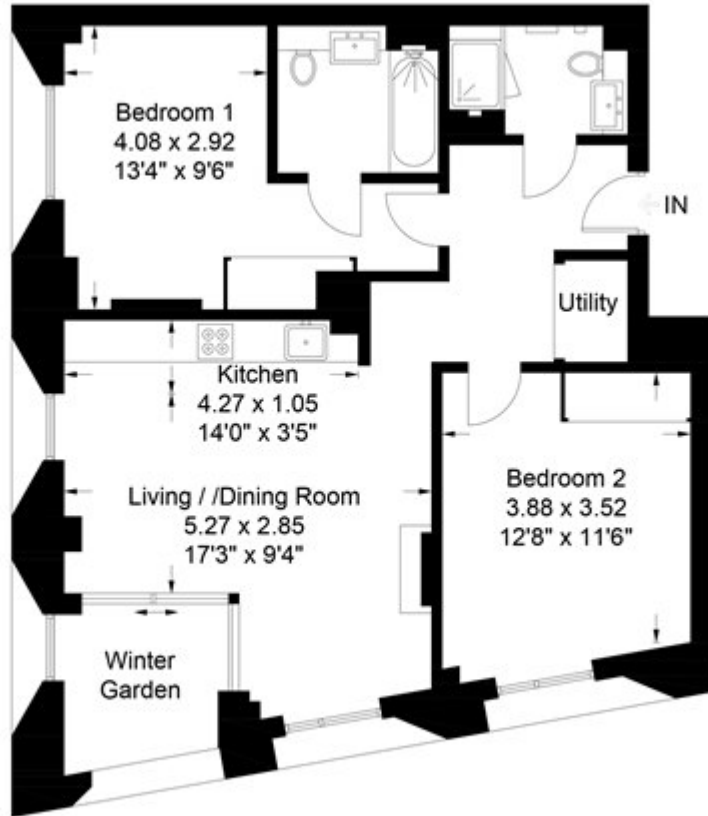


Ponton Road, London

£825 PW

Ponton Road, SW11  
Approximate Gross Internal Area = 70.9 sq m / 763 sq ft



Chase Evans makes every attempt to ensure accuracy, however all measurements are approximate. All aspects of this floor plan are for illustrative purposes only and not to scale. Errors and omissions excepted (E&OE).