

RIVERHOMES

King's Quay
Chelsea, SW10

£2,000 per week
Furnished



King's Quay Chelsea, SW10

SHORT LET The ideal Christmas retreat!

This stunning 3-bedroom penthouse in Chelsea Harbour offers luxurious living with a large south-facing terrace providing breathtaking views of the Harbour. The property boasts a spacious reception room with elegant décor and a high-specification kitchen. The master bedroom is a true retreat, flooded with natural light and featuring an impressive ensuite bathroom and dressing area. The second bedroom benefits from a contemporary ensuite shower room, while the

third room offers versatility as a guest bedroom or study.

Situated in a secure development with a lift and porter, this penthouse is moments from the vibrant shops and restaurants of Chelsea, Fulham, and King's Road, with easy access to Sloane Square and Knightsbridge. The development is close to Imperial Wharf Overground Station, Fulham Broadway Underground, and Thames Clippers, offering fast connections to key hubs like Canary Wharf and London Bridge.

KEY FEATURES

3 bedroom penthouse

3 bathrooms

South facing terrace with views of the harbour

Spacious reception room with elegant décor and a high-specification kitchen

Master with ensuite and dressing area

Secure development near The King's Road and transport





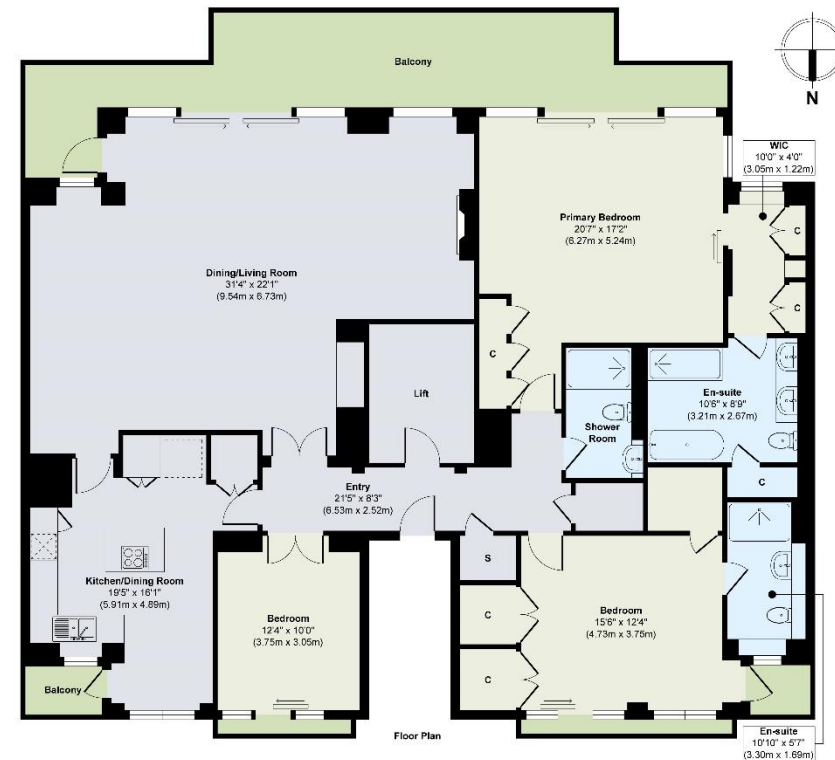
ENERGY PERFORMANCE CERTIFICATE

Score	Energy rating	Current	Potential
92+	A		
81-91	B		85 B
69-80	C	78 C	
55-68	D		
39-54	E		
21-38	F		
1-20	G		

KEY INFORMATION

Local authority:	Royal Borough of Hammersmith and Fulham
Internal area:	2,097 sq. ft. / 194.91 sq. m.
Garden area:	Spacious balcony
No. of bedrooms:	3
Council tax:	Band H

CHELSEA HARBOUR, CHELSEA SW10



Approx. Gross Internal Floor Area 2097 sq. ft / 194.91 sq. m

Illustration for identification purposes only, measurements are approximate, not to scale.