

# RIVERHOMES

Chancellors Road  
Hammersmith W6

£1,350,000  
Freehold



## Chancellors Road Hammersmith W6

A striking double-fronted villa in a highly sought-after riverside setting, offered with no onward chain. This beautifully presented home spans 1,449 sq. ft. and boasts a southeast-facing aspect, maximising natural light throughout. Arranged over three floors, the property comprises four spacious double bedrooms, two bathrooms, and two separate WCs. The ground floor features a magnificent open-plan kitchen, dining, and reception space, with bespoke cabinetry and direct access to a landscaped front garden.

The property is thoughtfully designed, incorporating elegant details such as plantation-style shutters, a ceiling fan, a generous pantry, and a decorative feature fireplace. A glazed ceiling to the rear enhances the sense of space and light, perfectly blending modern comforts with stylish design. Situated on Chancellors Road, just off Crisp Road and Fulham Palace Road, the villa benefits from proximity to Riverside Studios, St Paul's Boys' and Girls' Schools, and the green expanse of Frank Banfield Park.

### KEY FEATURES

**Four bedroom house**

**Two bathrooms**

**Open-plan kitchen**

**A decorative feature fireplace**

**A glazed ceiling**

**No onward chain**



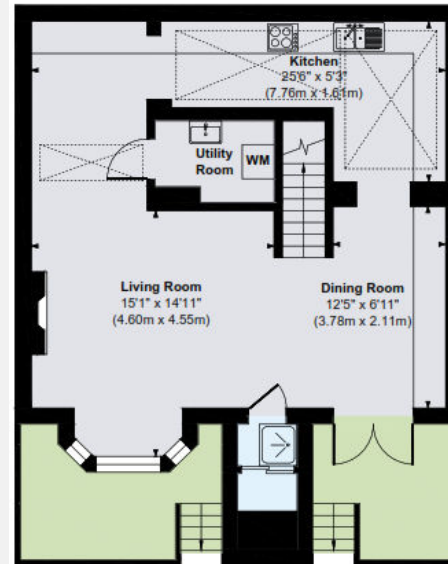


## ENERGY PERFORMANCE CERTIFICATE

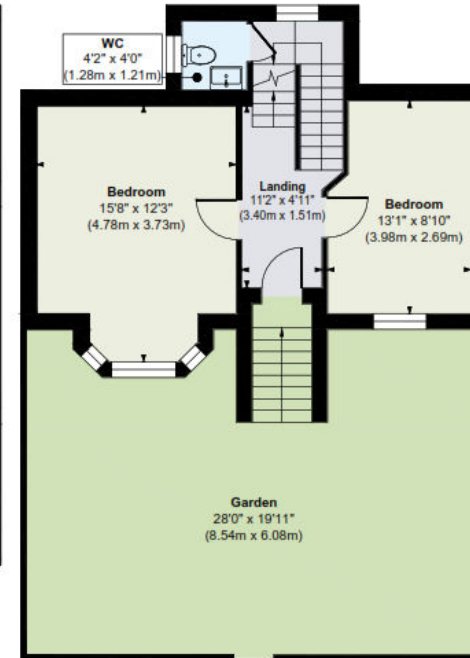
TBC

## KEY INFORMATION

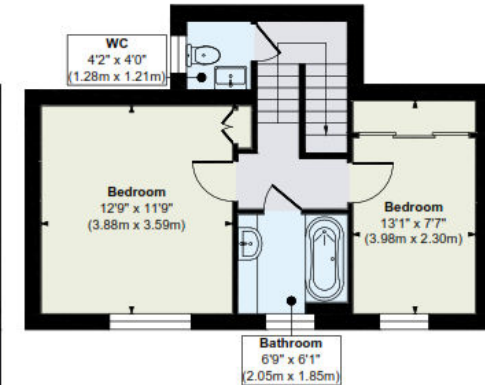
<b>Local authority:</b>	London Borough of Hammersmith and Fulham
<b>Internal area:</b>	1,449 sq. ft. / 134.76 sq. m.
<b>No. of bedrooms:</b>	4
<b>Council tax band</b>	F



**Lower Ground Floor**  
Approximate Floor Area  
654 sq. ft  
(60.77 sq. m)



**Ground Floor**  
Approximate Floor Area  
402 sq. ft  
(37.43 sq. m)



**First Floor**  
Approximate Floor Area  
393 sq. ft  
(36.56 sq. m)