

RIVERHOMES

Riverside West
Wandsworth SW18

£1,750,000
Leasehold



Riverside West Wandsworth SW18

Discover the epitome of boutique riverside living in this exquisite five-bedroom residence within the prestigious Riverside West Development. Thoughtfully designed to blend sophistication and comfort, this expansive apartment opens to an elegant double open-plan reception area with a fully fitted, designer kitchen—perfect for refined dining and entertaining. French doors lead to a private wrap-around terrace, where sweeping river views create an unparalleled backdrop.

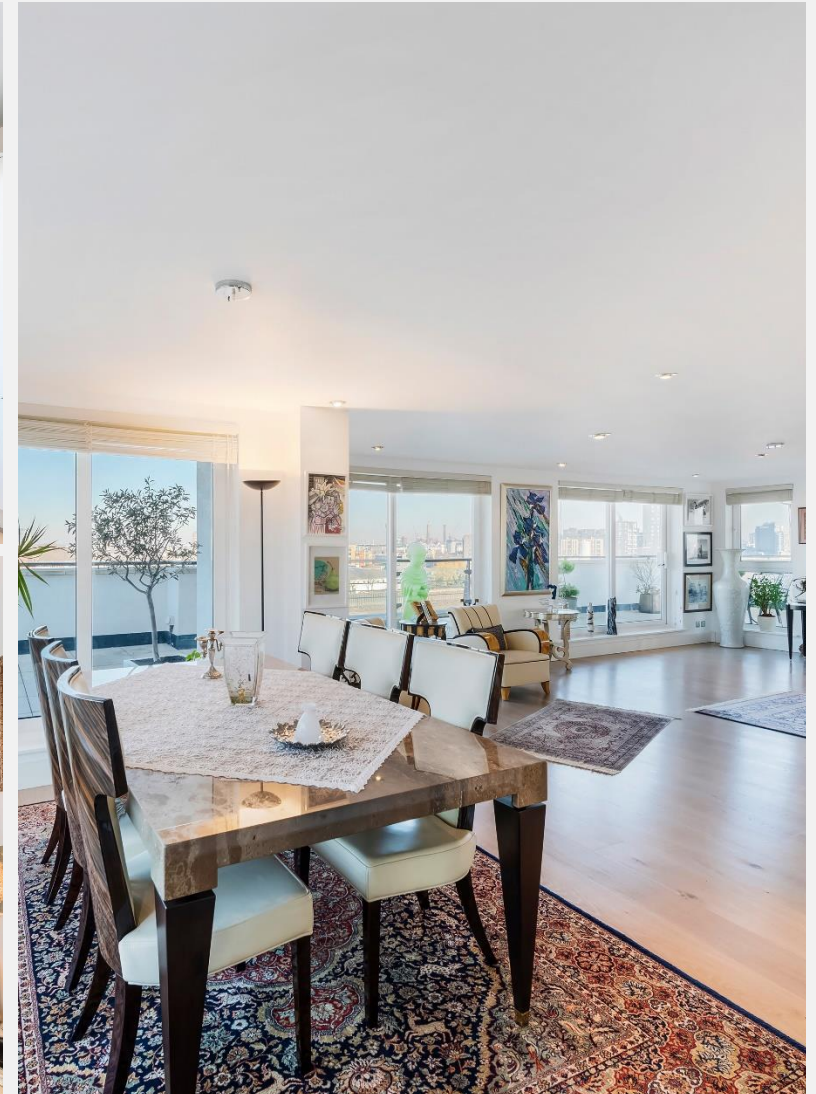
The primary suite is a sanctuary of luxury, complete with a walk-in wardrobe and a chic en-suite shower room. Each of the four additional double bedrooms is beautifully appointed, featuring custom-built closets, with one offering an additional en-suite for added privacy. A stylish family bathroom

and a utility room with ample storage further enhance this exceptional residence.

Riverside West elevates convenience with a dedicated 24-hour Concierge Service, ensuring residents enjoy a seamless lifestyle. Ideally positioned for city commuters, Wandsworth Town station is mere minutes away, with a direct line to Waterloo. Residents also benefit from a selection of on-site amenities, including a Hudson convenience store, nursery, and Virgin Active Gym. The vibrant Southside Shopping Centre, as well as an array of local boutiques and fine dining options, are just a short stroll away, making this home a truly unique blend of luxury, style, and convenience.

KEY FEATURES

- Spacious 5-bedroom apartment**
- 3 bathrooms**
- Elegant double open-plan reception area**
- Fully fitted designer kitchen**
- Private wrap-around terrace**
- Walk-in wardrobe**
- Additional utility room**
- Ample storage space**
- 24-hour concierge**





ENERGY PERFORMANCE CERTIFICATE

Score	Energy rating	Current	Potential
92+	A		
81-91	B		
69-80	C		77 C
55-68	D	65 D	
39-54	E		
21-38	F		
1-20	G		

KEY INFORMATION

Local authority:	London Borough of Wandsworth
Internal area:	2,386 sq. ft. / 221.63 sq. m.
Garden area:	Spacious garden
No. of bedrooms:	5
Council tax:	Band D
Service charges:	TBC
Lease length:	980 years remaining

