

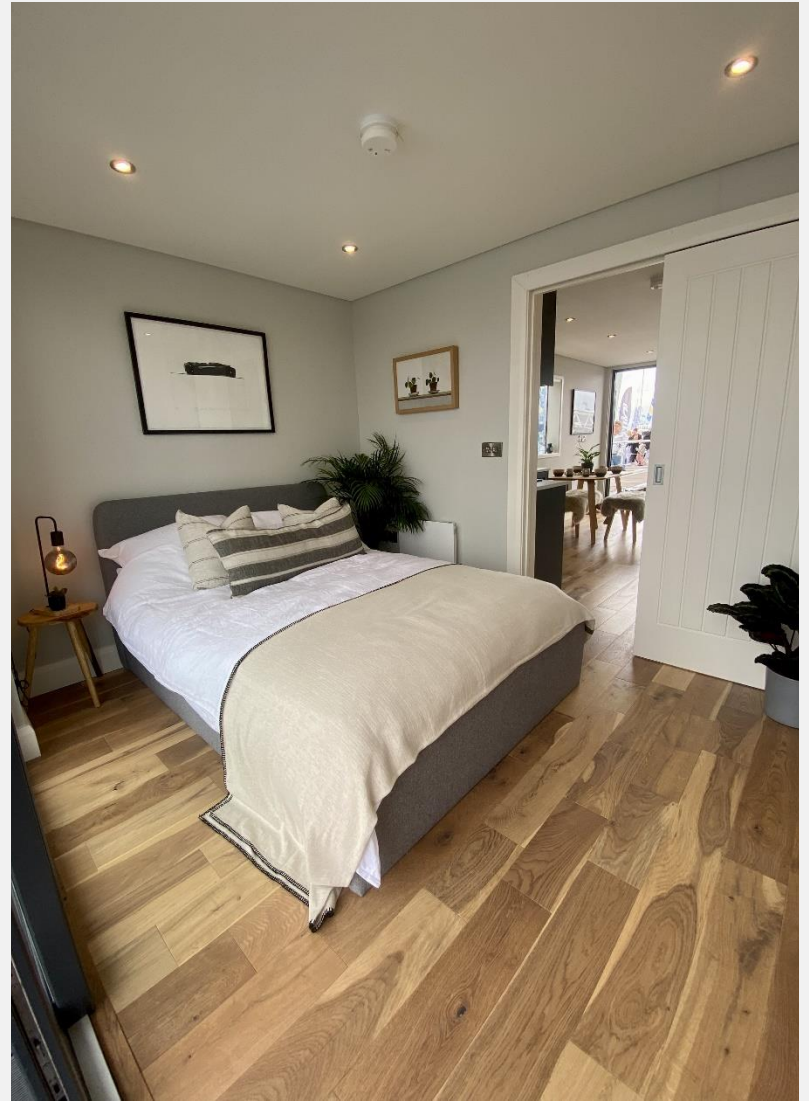


Limehouse Waterside & Marina Limehouse E14

A different kind of home from home. This M Series vessel is 12 m. long and 4.5 m. wide, this model has been designed to give maximum interior space, while still fitting within a standard marina berth and with the added bonus of a 2 m. balcony front and rear ideal for al fresco entertaining. Glass windows along the full width of the front, with sliding doors for access, creates a bright airy living / dining / kitchen space bathed in natural light. The M350 can either have one larger master bedroom, or a double and a separate single bedroom layout.

The kitchen, bathroom and other internal fittings are of high specification, ensuring the same standard of living on water as on land.





Limehouse Waterside & Marina Limehouse E14

Limehouse Waterside & Marina, situated between the City of London and Canary Wharf, offers a unique waterside living experience in the heart of the city. This modern marina serves as a gateway between the River Thames and over 2,000 miles of navigable canals and rivers. It features secure moorings with CCTV, laundry facilities, showers, and Wi-Fi. Surrounded by cobbled streets, historic riverside pubs, and excellent restaurants, the marina creates a tranquil oasis amidst the bustling city. With Limehouse DLR station nearby, residents enjoy quick access to central London and its many attractions.

No council tax - Leisure mooring.
Mooring charge £14,009.10 approx. per annum.

KEY FEATURES

- New Build**
- One bedroom houseboat**
- Full kitchen**
- Shower room**
- Two balconies**
- Charming Marina**





Limehouse Waterside & Marina
Limehouse E14

£220,000
Leisure mooring



KEY INFORMATION

- Local authority:** London Borough of Tower Hamlets
- Internal area:** 309 sq. ft. / 28.72 sq. m.
- No. of bedrooms:** 1
- Mooring charge:** £14,009.10 approx. per annum



Floor Plan
Approximate Floor Area
309 sq. ft
(28.72 sq. m)



RIVERHOMES

Central London Branch
Tintagel House
92 Albert Embankment
SE1 7TY

020 7407 8000
www.riverhomes.co.uk



World Waterside Ltd trading as riverhomes for themselves and its clients give notice that 1: They are not authorised to make or give any representations or warranties in relation to the property either here or elsewhere, either on their own behalf or on behalf of their client or otherwise. 2: These particulars do not form part of any offer or contract and must not be relied upon as statements or representations of fact. Any areas, measurements or distances are approximate. The text, photographs and plans are for guidance only and are not necessarily comprehensive. 3: It should not be assumed that the property has all necessary planning, building regulation or other consents and any services, equipment or facilities have not been tested. 4: Lease details, service charges, ground rent (where applicable) and council tax are given as a guide only and should be checked and confirmed by your Solicitor prior to exchange of contracts. 5: They assume no responsibility and any intending purchasers or tenants must satisfy themselves by inspection or otherwise as to the correctness of each of the statements contained within these particulars. If you require clarification of any points please contact us.