

RIVERHOMES

Chiswick Mall
Chiswick W4

£3,950,000
Freehold



**Chiswick Mall
Chiswick W4**

RiverHomes is delighted to offer this magnificent Georgian Grade 2 listed townhouse on exclusive Chiswick Mall. This four bedroom family home located on the Chiswick Riviera with uninterrupted sweeping one hundred and eighty degree views of the River Thames in West London. The property is a veritable "Tardis" with a discreet frontage opening up into a large family home of over 300 sq. m.

Ground floor: living room, large kitchen diner opening up to a large mature 140ft garden with

rear access, lower ground: utility room; shower room large reception room and courtyard. First floor: large reception room (with beautiful river views) bedroom one and bathroom; second floor bedroom two, overlooking the river (with en suite shower room) and bedroom three and family bathroom. Top floor large master bedroom with en suite shower room and special views. Finally, the property comes with a river garden with 37ft river frontage and potential to moor (STPP).





Chiswick Mall Chiswick W4

Chiswick Mall is located in West London, close to the A4/M4/M3 for easy access both into and out of Central London. Turnham Green Underground station is a brisk 10 minute walk as is the thriving and bustling Chiswick High Road with its large array of retail outlets, independent restaurants and coffee shops plus all the major supermarkets.

KEY FEATURES

Georgian grade II listed townhouse

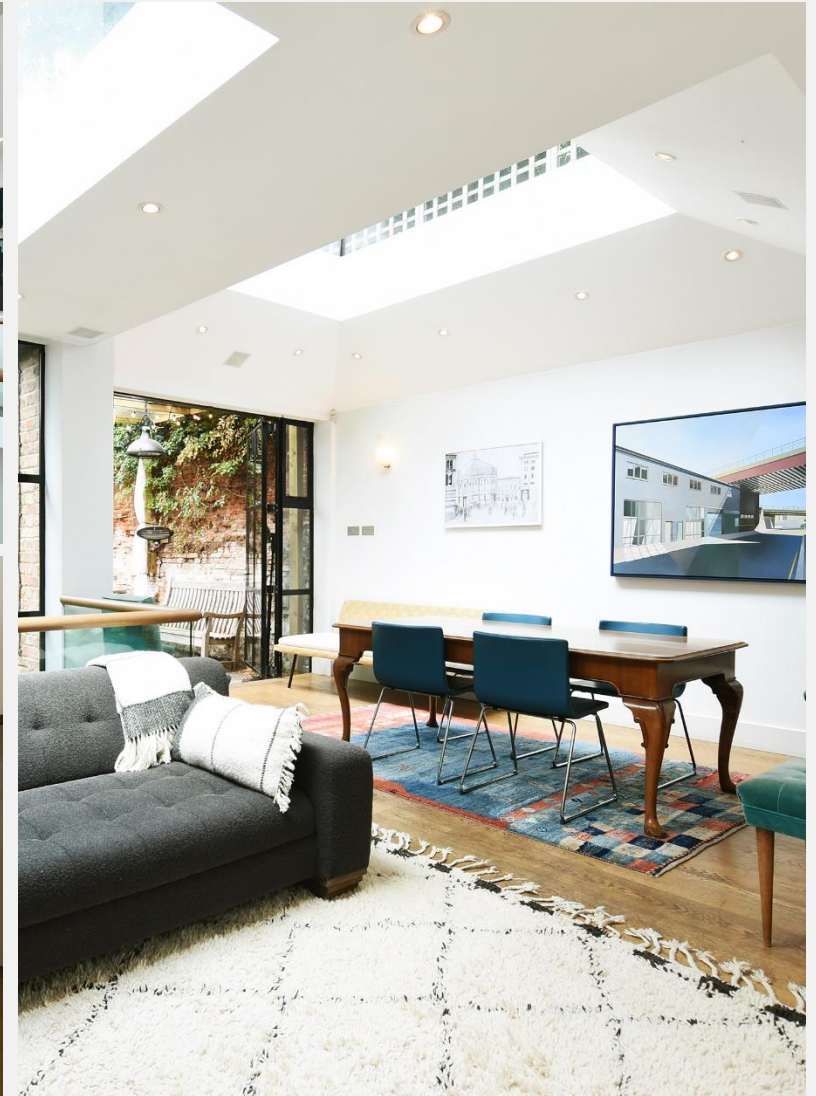
Four bedrooms

140 ft. garden with rear access

Beautiful River views

37 ft. river garden

Potential to moor (STPP)





Chiswick Mall
Chiswick W4

£3,950,000
Freehold

ENERGY PERFORMANCE CERTIFICATE

Score	Energy rating	Current	Potential
92+	A		
81-91	B		85 B
69-80	C	78 c	
55-68	D		
39-54	E		
21-38	F		
1-20	G		

KEY INFORMATION

Local authority: London Borough of Hounslow
Internal area: 3,250 sq. ft. / 301.90 sq. m.
Tenure: Freehold
Number of bedrooms: 5
Tax band: G





RIVERHOMES

West London Branch
28 Thames Road
London
W4 3RJ

020 8995 0500
www.riverhomes.co.uk



World Waterside Ltd trading as riverhomes for themselves and its clients give notice that 1: They are not authorised to make or give any representations or warranties in relation to the property either here or elsewhere, either on their own behalf or on behalf of their client or otherwise. 2: These particulars do not form part of any offer or contract and must not be relied upon as statements or representations of fact. Any areas, measurements or distances are approximate. The text, photographs and plans are for guidance only and are not necessarily comprehensive. 3: It should not be assumed that the property has all necessary planning, building regulation or other consents and any services, equipment or facilities have not been tested. 4: Lease details, service charges, ground rent (where applicable) and council tax are given as a guide only and should be checked and confirmed by your Solicitor prior to exchange of contracts. 5: They assume no responsibility and any intending purchasers or tenants must satisfy themselves by inspection or otherwise as to the correctness of each of the statements contained within these particulars. If you require clarification of any points please contact us.