

RIVERHOMES

West India Quay
Docklands E14

£2,665 per month
Furnished



West India Quay Docklands E14

This spacious 24th floor one bedroom apartment has spectacular views of the London skyline. At approximately 604 sq. ft., this apartment is far larger than average and is finished to a high standard, with wood flooring and floor-to-ceiling windows. Tenants also benefit from secure parking for one car. With some of the best views of London from Docklands, No.1 West India Quay provides sumptuous living accommodation in one of the most sought-after areas in London. The property is finished to a very high standard and benefits from a 24 hour concierge and underground parking. This iconic tower is located in Canary Wharf & only moments away from the West India DLR station and Canary Wharf (Jubilee Line) underground station.

KEY FEATURES

1 bedroom

1 bathroom

Spacious 24th floor apartment

Floor-to-ceiling windows

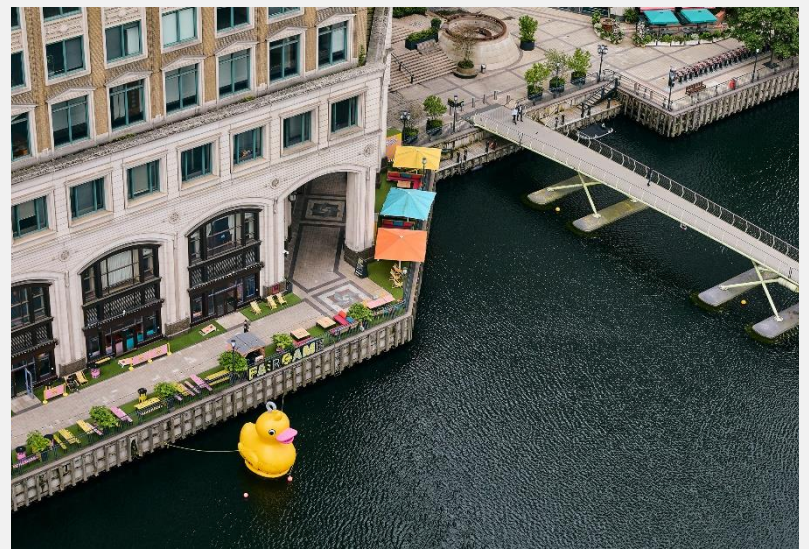
Secure underground parking for one car

Direct views of the dock and London skyline

24 hour concierge

Transport links via DLR & Jubilee lines





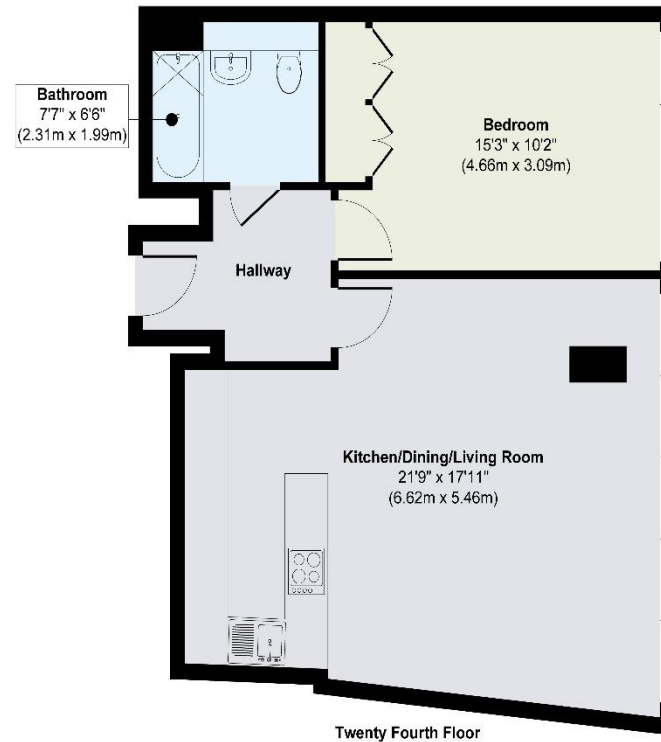
ENERGY PERFORMANCE CERTIFICATE

Score	Energy rating	Current	Potential
92+	A		
81-91	B	83 B	85 B
69-80	C		
55-68	D		
39-54	E		
21-38	F		
1-20	G		

KEY INFORMATION

Local authority:	London Borough of Tower Hamlets
Internal area:	601 sq. ft. / 55.85 sq. m.
Council tax:	F
Available:	19 th February 2025
No. of bedrooms:	1

WEST INDIA QUAY, DOCKLANDS E14



Approx. Gross Internal Floor Area 601 sq. ft / 55.85 sq. m
Illustration for identification purposes only, measurements are approximate, not to scale.