

RIVERHOMES

**Kenilworth Court
Putney SW15**

**£850,000
Leasehold**



Kenilworth Court Putney SW15

Nestled on the third floor of the highly coveted Kenilworth Court, this exceptional two-bedroom mansion flat offers an unparalleled blend of elegance, charm, and breathtaking river views. With uninterrupted vistas from the living room and both bedrooms, the apartment is bathed in natural light, exuding a serene and sophisticated ambiance.

Built in 1902, this Edwardian gem showcases timeless architectural details, including soaring ceilings, graceful proportions, and period charm. Encompassing over 1,200 sq. ft. of impeccably designed living space, the apartment features a luminous double bay-fronted

reception room, a spacious kitchen/diner, a sumptuous principal bedroom, an additional double bedroom, a family bathroom, and a separate WC.

Kenilworth Court epitomizes boutique living, boasting immaculately tended communal gardens, secure gated parking, and attentive on-site portering. Ideally situated, it offers effortless access to an array of independent boutiques, acclaimed restaurants, vibrant bars, and well-known supermarkets.

KEY FEATURES

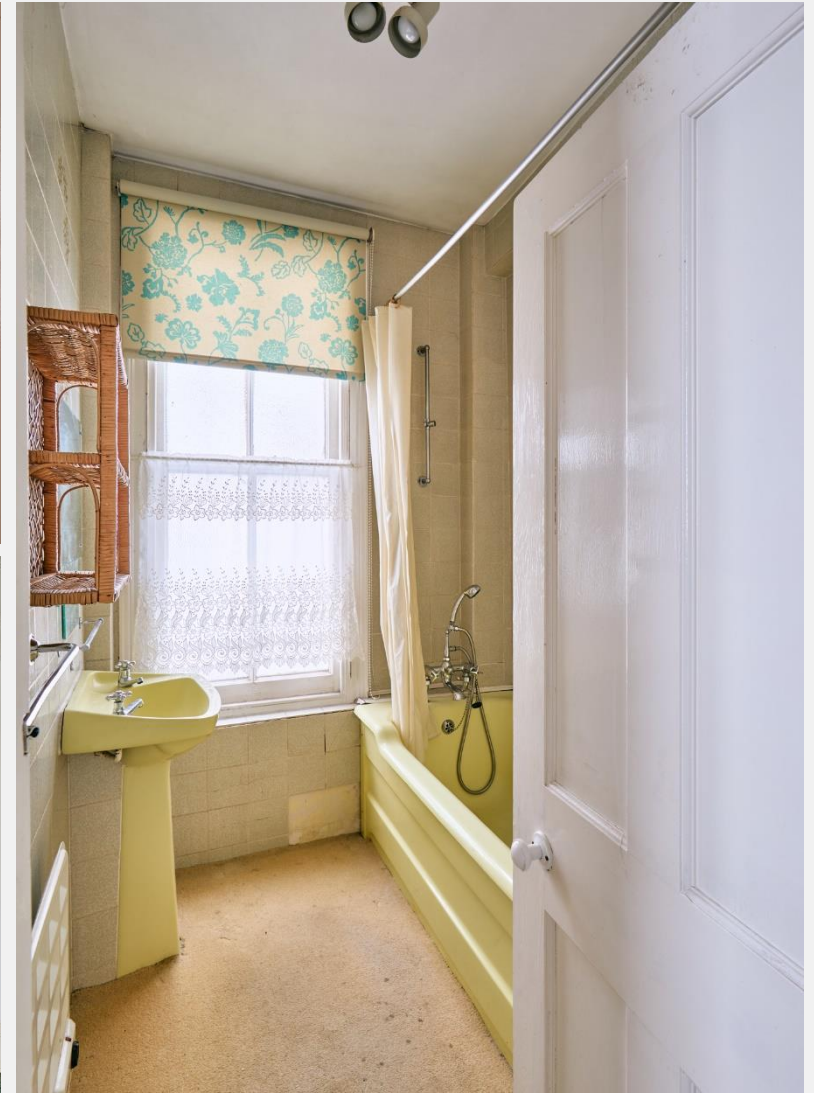
2 double bedrooms

1 bathroom and separate WC

Spacious kitchen / diner

Direct river views

**Conveniently located close to shops,
restaurants and public transport**





ENERGY PERFORMANCE CERTIFICATE

Score	Energy rating	Current	Potential
92+	A		
81-91	B		84 B
69-80	C	77 C	
55-68	D		
39-54	E		
21-38	F		
1-20	G		

KEY INFORMATION

Local authority:	London Borough of Wandsworth
Internal area:	1,054 sq. ft. / 97.98 sq. m.
Garden area:	Communal Garden
No. of bedrooms:	2
Council tax:	Band E
Lease length:	68 years left

KENILWORTH COURT, PUTNEY SW15

