





## Zephyr Riverside Chelsea SW10

This is a brand new, 1,727 sq. ft two bedroom houseboat moored on prestigious Cheyne Walk. Enjoying exceptional river views and split over two levels, this stylish floating home has two double bedrooms with en-suite bathrooms. The open plan dining/kitchen/living space provides direct access to the spacious sun deck with sensational views across the Thames. The fully integrated kitchen has a large range-style oven, induction hob, dishwasher, fridge and freezer. There is a separate utility/laundry room, cloakroom and a store room. The en suite in the primary bedroom also has river views.

There is air conditioning and climate control and the bathrooms have underfloor heating.

With all the comforts of a typical home such as direct mains electricity, water, sewerage, high speed wi-fi, all residents of this charming mooring also benefit from a night watchman, CCTV, concierge and an on-site maintenance team. Cheyne Walk is close to a number of transport options; the green spaces of Battersea Park and the shopping and leisure amenities of Kings Road and Sloane Square.

### KEY FEATURES

**Brand new houseboat**

**Two double bedrooms with dressing rooms**

**Two bathrooms**

**Spacious sun deck**

**Separate utility / laundry room**

**Separate cloakroom**

**High-speed wifi**

**Air conditioning and climate control**

**Mains electricity, water, sewerage**

**Night watchman and CCTV**

**Conveniently located close to restaurants, shops and public transport**



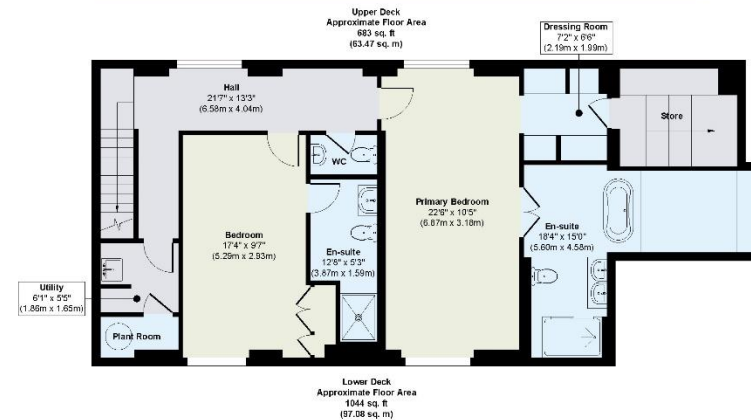
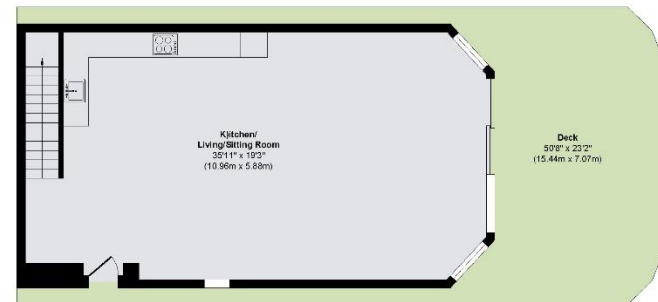




## KEY INFORMATION

<b>Local authority:</b>	Royal Borough of Kensington and Chelsea
<b>Internal area:</b>	1,727 sq. ft. / 160.55 sq. m.
<b>Garden area:</b>	Deck
<b>No. of bedrooms:</b>	2

## CHEYNE WALK, CHELSEA SW10



**Approx. Gross Internal Floor Area 1727 sq. ft / 160.55 sq. m**

Illustration for identification purposes only, measurements are approximate, not to scale.