



Palace Wharf Hammersmith W6

A strikingly brand-new interior designed two bedroom, two bathroom, first floor apartment set within this newly converted, warehouse style, gated development on the River Thames. The apartment boasts a bright open plan kitchen and living area, master bedroom with en suite shower room and an additional guest bathroom. The fully fitted Metris Kitchen is complete with Miele appliances including an integrated dishwasher, washer / dryer, full height fridge-freezer, oven, hob and integrated extractor fan as well as a Caple wine cooler. The bathrooms comprise of full

bathroom suites with underfloor heating whilst the bedrooms boast bespoke mirrored wardrobes and automatic lights which are sure to impress. Further benefits of the apartment include a Crestron audio visual system, a digital video door entry system and pre-wiring for Sky + TV. With its riverside location, Palace Wharf is also conveniently close to a number of transport links including Hammersmith, Barons Court, Putney Bridge and Fulham Broadway Underground Stations, along with several regular and varied bus services which further improve accessibility.

KEY FEATURES

2 bedrooms

2 bathrooms

New build gated development

On-site building manager

Secure parking available

Key phone entry system

Pet friendly

Available from 4th February 2025



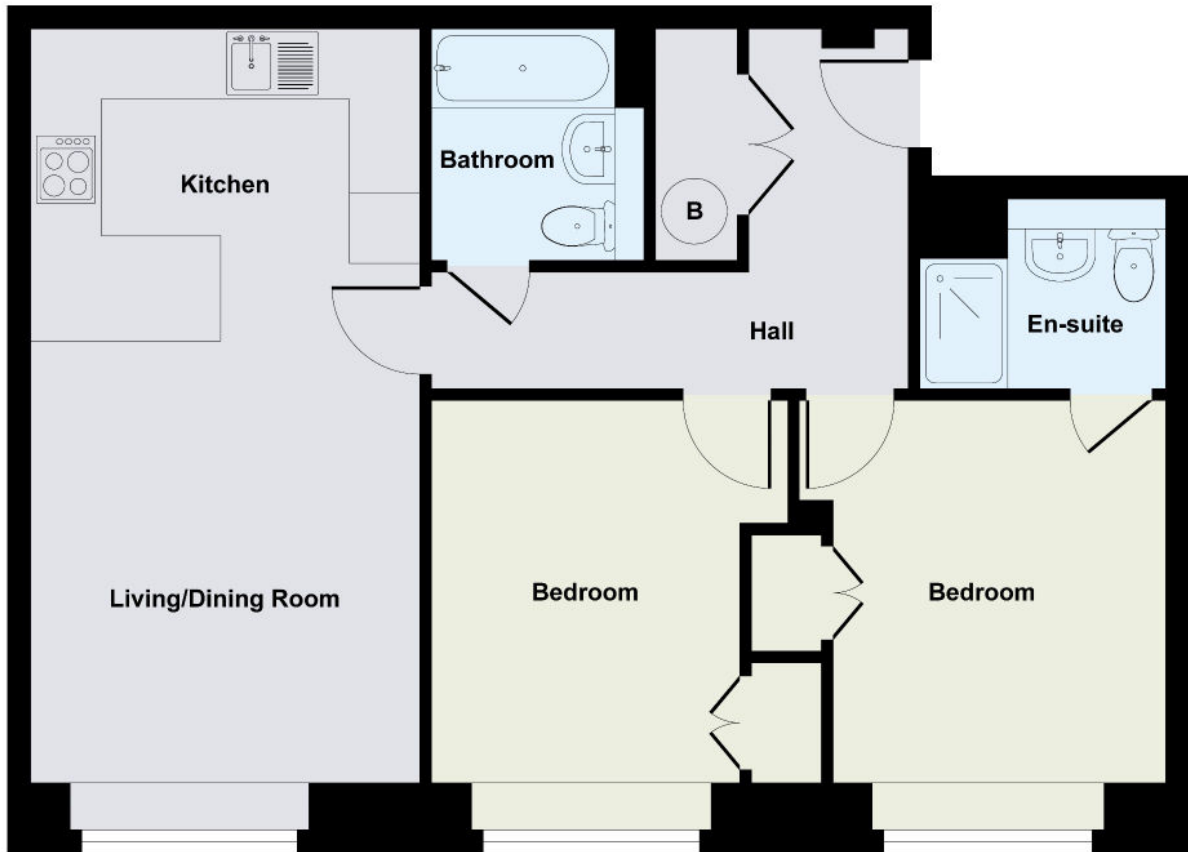


ENERGY PERFORMANCE CERTIFICATE

Score	Energy rating	Current	Potential
92+	A		
81-91	B		
69-80	C		
55-68	D	60 D	60 D
39-54	E		
21-38	F		
1-20	G		

KEY INFORMATION

Local authority:	London Borough of Hammersmith & Fulham
Internal area:	694 sq. ft. / 64.47 sq. m.
Council tax band:	C
Available from:	4 th February 2025



Floor Plan