

# RIVERHOMES

Poplar Waterside & Marina  
Poplar E14

£150,000  
Leisure Mooring



## Poplar Waterside & Marina Poplar E14

Step aboard this extraordinary floating home, just minutes from Canary Wharf. Seamlessly blending comfort and convenience, Nautilus is sure to impress with its bespoke specifications and handcrafted interiors - the perfect pied-à-terre!

This is a unique opportunity to acquire a bespoke water home, conveniently located at Poplar Marina. This perfectly designed one-bedroom home features a fitted kitchenette with integrated appliances and ample cupboard space, a modern bathroom with an electric flush toilet and shower, and a contemporary styled living space.

The houseboat is fully insulated to meet building regulations and is equipped with heating, ensuring a comfortable living environment year-round. It boasts

an electric propulsion system and a mains water connection, and can also be used 'off-grid'.

The highlight has to be your own private roof terrace, ideal for sunbathing, dining al fresco, or simply enjoying the scenic views of the marina.

Location: Poplar Marina is just a short walk from the Canary Wharf estate, with its wide array of shops, restaurants, and entertainment options. The marina is well connected to the DLR, Jubilee Line, and Elizabeth Line. The current mooring enjoys a sunny southerly aspect in a quiet part of the marina.

### KEY FEATURES

**One-bedroom floating home**

**Fitted kitchenette**

**Ample storage**

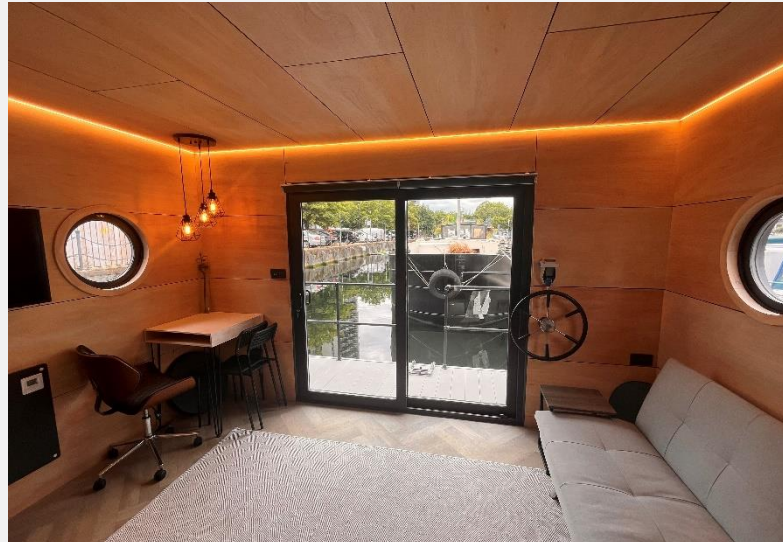
**Modern bathroom**

**Electric propulsion system**

**Main water connection**

**Roof terrace**

**Conveniently located close to shops,  
restaurants and public transport**





# RIVERHOMES

Central London Branch  
Tintagel House  
92 Albert Embankment  
SE1 7TY

020 7407 8000  
[www.riverhomes.co.uk](http://www.riverhomes.co.uk)

## KEY INFORMATION

<b>Local authority:</b>	London Borough of Tower Hamlets
<b>Internal area:</b>	225 sq. ft.
<b>Garden area:</b>	Deck
<b>No. of bedrooms:</b>	1
<b>Mooring charges:</b>	£9,000 per year approx.



World Waterside Ltd trading as riverhomes for themselves and its clients give notice that 1: They are not authorised to make or give any representations or warranties in relation to the property either here or elsewhere, either on their own behalf or on behalf of their client or otherwise. 2: These particulars do not form part of any offer or contract and must not be relied upon as statements or representations of fact. Any areas, measurements or distances are approximate. The text, photographs and plans are for guidance only and are not necessarily comprehensive. 3: It should not be assumed that the property has all necessary planning, building regulation or other consents and any services, equipment or facilities have not been tested. 4: Lease details, service charges, ground rent (where applicable) and council tax are given as a guide only and should be checked and confirmed by your Solicitor prior to exchange of contracts. 5: They assume no responsibility and any intending purchasers or tenants must satisfy themselves by inspection or otherwise as to the correctness of each of the statements contained within these particulars. If you require clarification of any points please contact us.